



SINOTAG

One Stop Shop for All Your Security Needs



2023

CONTENTS

02	Company Introduction
03	System
14	Board
18	Deactivator & Verifier
22	Alarming Series
24	Hard Tag
33	Bottle Tag
36	Ink Tag
39	Special Tag
40	AM Label
41	RF Label
43	Source Tagging
44	EM Series
45	Safer
50	Detacher
54	Lanyard
55	Clutch & Hook
57	Accessory (Pin, Coil, etc.)



ABOUT US

Sinotag Electronic Technology Co., Ltd is a leading manufacturer of EAS (Electronic Article Surveillance) products in China. With over 20 years experience in EAS industry, Sinotag has developed more than 200 different types of EAS products ranging from RF/AM Systems & Deactivators, RF/AM Hard Tags, RF/AM Labels, Source Tagging Items and EAS Accessories etc. We are committed to provide our customers one stop shop solution for all their security needs with top quality and competitive price.

Sinotag team is both rich in manufacture experience and professional in international sales. Besides, we are dedicated in innovation and creation so as to stand at forefront in competition. Due to our sustained endeavor, Sinotag has kept fast development and proved its success in recent years. Meanwhile, Sinotag has successfully built its network worldwide and set up warehouses in the States and Europe to better serve our customers. We are confident that Sinotag has more bright future and look forward to working with you.



SD-100(RF Chrome System)

Frequency: 8.2MHz

Material: Stainless steel frame with plastic base cover.

Dimension: 152cm(Height), 31cm(Width), 7cm(Depth), 4kg(Weight)

Packing:

Mono: 1pc/ctn, 0.139cbm(170x51x16cm), 7kg

Dual: 2pcs/ctn, 0.217cbm(170x51x25cm), 12kg

Detection (Mono):

RF Label(4x4): 2x80cm

Mini Tag(Mini Square): 2x110cm

Midi Tag(R50): 2x130cm

Max Tag(Alpha): 2x150cm

Detection (Dual):

RF Label(4x4): 140cm

Mini Tag(Mini Square): 160cm

Midi Tag(R50): 180cm

Max Tag(Alpha): 200cm

Main Features

DSP (Digital Signal Processing) technology with high sensitivity.

Auto noise filtering to counter interference and minimize false alarm.

High pick rate with ability to distinguish moving and static tags & labels.

Easy installation with auto synchronization (wireless connection).

Audible and visual alarm indication with adjustable speaker and LED light.



SD-101(RF Chrome System)

Frequency: 8.2MHz

Material: Stainless steel frame with metal base cover.

Dimension: 167cm(Height), 32cm(Width), 7cm(Depth), 7kg(Weight)

Packing:

Mono: 2pcs/ctn, 0.101cbm(175x36x16cm), 10kg

Dual: 2pcs/ctn, 0.158cbm(175x36x25cm), 20kg

Detection(Mono):

RF Label(4x4): 2x80cm

Mini Tag(Mini Square): 2x110cm

Midi Tag(R50): 2x130cm

Max Tag(Alpha): 2x150cm

Detection(Dual):

RF Label(4x4): 140cm

Mini Tag(Mini Square): 160cm

Midi Tag(R50): 180cm

Max Tag(Alpha): 200cm

Main Features

DSP (Digital Signal Processing) technology with high sensitivity.

Auto noise filtering to counter interference and minimize false alarm.

High pick rate with ability to distinguish moving and static tags & labels.

Easy installation with auto synchronization (wireless connection).

Audible and visual alarm indication with adjustable speaker and LED light.



SD-102(RF Aluminum System)

Frequency: 8.2MHz

Material: Aluminum frame with metal or plastic base cover.

Removable acrylic plates for advertising purpose (Optional).

Color: Black/Gray or Customized

Dimension: 167cm(Height), 46cm(Width), 7cm(Depth), 5kg(Weight)

Packing:

Mono: 1pc/ctn, 0.039cbm(169x47x5cm), 10kg

Dual: 2pcs/ctn, 0.064cbm(169x47x8cm), 14kg

Detection(Mono):

RF Label(4x4): 2x90cm

Mini Tag(Mini Square): 2x120cm

Midi Tag(R50): 2x140cm

Max Tag(Alpha): 2x160cm

Detection(Dual):

RF Label(4x4): 150cm

Mini Tag(Mini Square): 170cm

Midi Tag(R50): 190cm

Max Tag(Alpha): 210cm

Main Features

DSP (Digital Signal Processing) technology with high sensitivity.

Auto noise filtering to counter interference and minimize false alarm.

High pick rate with ability to distinguish moving and static tags & labels.

Easy installation with auto synchronization (wireless connection).

Audible and visual alarm indication with adjustable speaker and LED light.



SD-103(RF Aluminum System)

Frequency: 8.2MHz
 Material: Aluminum frame with metal base cover.
 Removable acrylic plates for advertising purpose (Optional).
 Color: Black/Gray or Customized
 Dimension: 162cm(Height), 40cm(Width), 4cm(Depth), 7.5kg(Weight)

Packing:
 Mono: 1pc/ctn, 0.083cbm(168x45x11cm), 8kg
 Dual: 2pcs/ctn, 0.113cbm(168x45x15cm), 14kg

Detection(Mono):	Detection(Dual):
RF Label(4x4): 2x90cm	RF Label(4x4): 150cm
Mini Tag(Mini Square): 2x120cm	Mini Tag(Mini Square): 170cm
Midi Tag(R50): 2x140cm	Midi Tag(R50): 190cm
Max Tag(Alpha): 2x160cm	Max Tag(Alpha): 210cm

Main Features
 DSP (Digital Signal Processing) technology with high sensitivity.
 Auto noise filtering to counter interference and minimize false alarm.
 High pick rate with ability to distinguish moving and static tags & labels.
 Easy installation with auto synchronization (wireless connection).
 Audible and visual alarm indication with adjustable speaker and LED light.



SD-104(RF Aluminum System)

Frequency: 8.2MHz
 Material: Aluminum frame with metal base cover.
 Removable acrylic plates for advertising purpose (Optional).
 Color: Black/Gray or Customized
 Dimension: 167cm(Height), 44cm(Width), 7cm(Depth), 8.5kg(Weight)

Packing:
 Mono: 1pc/ctn, 0.064cbm(169x47x8cm), 9kg
 Dual: 2pcs/ctn, 0.087cbm(169x47x11cm), 19kg

Detection(Mono):	Detection(Dual):
RF Label(4x4): 2x90cm	RF Label(4x4): 150cm
Mini Tag(Mini Square): 2x120cm	Mini Tag(Mini Square): 170cm
Midi Tag(R50): 2x140cm	Midi Tag(R50): 190cm
Max Tag(Alpha): 2x160cm	Max Tag(Alpha): 210cm

Main Features
 DSP (Digital Signal Processing) technology with high sensitivity.
 Auto noise filtering to counter interference and minimize false alarm.
 High pick rate with ability to distinguish moving and static tags & labels.
 Easy installation with auto synchronization (wireless connection).
 Audible and visual alarm indication with adjustable speaker and LED light.



SD-105(RF Aluminum System)

Frequency: 8.2MHz
 Material: Aluminum frame with metal base cover.
 Removable acrylic plates for advertising purpose (Optional).
 Color: Black/Gray or Customized
 Dimension: 167cm(Height), 33cm(Width), 7cm(Depth), 7kg(Weight)

Packing:
 Mono: 1pc/ctn, 0.049cbm(169x36x8cm), 8kg
 Dual: 2pcs/ctn, 0.067cbm(169x36x11cm), 16kg

Detection(Mono):	Detection(Dual):
RF Label(4x4): 2x80cm	RF Label(4x4): 140cm
Mini Tag(Mini Square): 2x110cm	Mini Tag(Mini Square): 160cm
Midi Tag(R50): 2x130cm	Midi Tag(R50): 180cm
Max Tag(Alpha): 2x150cm	Max Tag(Alpha): 200cm

Main Features
 DSP (Digital Signal Processing) technology with high sensitivity.
 Auto noise filtering to counter interference and minimize false alarm.
 High pick rate with ability to distinguish moving and static tags & labels.
 Easy installation with auto synchronization (wireless connection).
 Audible and visual alarm indication with adjustable speaker and LED light.



SD-110(RF Acrylic System)

Frequency: 8.2MHz
 Material: High grade acrylic frame with metal base cover.
 Dimension: 158cm(Height), 36cm(Width), 2cm(Depth), 18kg(Weight)

Packing:
 Mono: 1pc/ctn, 0.084cbm(158x41x13cm), 20kg
 Dual: 2pcs/ctn, 0.104cbm(158x41x16cm), 38kg

Detection(Mono):	Detection(Dual):
RF Label(4x4): 2x90cm	RF Label(4x4): 150cm
Mini Tag(Mini Square): 2x120cm	Mini Tag(Mini Square): 170cm
Midi Tag(R50): 2x140cm	Midi Tag(R50): 190cm
Max Tag(Alpha): 2x160cm	Max Tag(Alpha): 210cm

Main Features
 DSP (Digital Signal Processing) technology with high sensitivity.
 Auto noise filtering to counter interference and minimize false alarm.
 High pick rate with ability to distinguish moving and static tags & labels.
 Easy installation with auto synchronization (wireless connection).
 Audible and visual alarm indication with adjustable speaker and LED light.



SD-114(RF Acrylic System)

Frequency: 8.2MHz
 Material: High grade acrylic frame with metal base cover.
 Dimension: 152cm(Height), 20cm(Width), 2cm(Depth), 10kg(Weight)

Packing:
 Mono: 1pc/ctn, 0.067cbm(154x27x16cm), 13kg
 Dual: 2pcs/ctn, 0.079cbm(154x27x19cm), 24kg

Detection(Mono):	Detection(Dual):
RF Label(4x4): 2x80cm	RF Label(4x4): 140cm
Mini Tag(Mini Square): 2x110cm	Mini Tag(Mini Square): 160cm
Midi Tag(R50): 2x130cm	Midi Tag(R50): 180cm
Max Tag(Alpha): 2x150cm	Max Tag(Alpha): 200cm

Main Features
 DSP (Digital Signal Processing) technology with high sensitivity.
 Auto noise filtering to counter interference and minimize false alarm.
 High pick rate with ability to distinguish moving and static tags & labels.
 Easy installation with auto synchronization (wireless connection).
 Audible and visual alarm indication with adjustable speaker and LED light.



SD-123(RF Plastic System)

Frequency: 8.2MHz
 Material: Aluminum frame coated with plastic and with metal base cover.
 Dimension: 156cm(Height), 37cm(Width), 9cm(Depth), 6kg(Weight)

Packing:
 Dual: 2pcs/ctn, 0.125cbm(162x43x18cm), 17kg

Detection(Dual):
 RF Label(4x4): 140cm
 Mini Tag(Mini Square): 160cm
 Midi Tag(R50): 180cm
 Max Tag(Alpha): 200cm

Main Features
 DSP (Digital Signal Processing) technology with high sensitivity.
 Auto noise filtering to counter interference and minimize false alarm.
 High pick rate with ability to distinguish moving and static tags & labels.
 Easy installation with simple synchronization by normal wires in connection.
 Audible and visual alarm indication with adjustable speaker and LED light.



SD-124(RF Plastic System)

Frequency: 8.2MHz

Material: Chrome frame coated with plastic and with plastic base cover.

Dimension: 161cm(Height), 34cm(Width), 10cm(Depth), 7.5kg(Weight)

Packing:

Dual: 2pcs/ctn, 0.199cbm(174x44x26cm), 20kg

Detection(Dual):

RF Label(4x4): 140cm

Mini Tag(Mini Square): 160cm

Midi Tag(R50): 180cm

Max Tag(Alpha): 200cm

Main Features

DSP (Digital Signal Processing) technology with high sensitivity.

Auto noise filtering to counter interference and minimize false alarm.

High pick rate with ability to distinguish moving and static tags & labels.

Easy installation with simple synchronization by normal wires in connection.

Audible and visual alarm indication with adjustable speaker and LED light.



SD-151(AM Plastic System)

Frequency: 58KHz

Material: ABS plastic frame with metal base cover.

Dimension: 155cm(Height), 42cm(Width), 3.5cm(Depth)

Packing:

Dual: 2pcs/ctn, 0.155cbm(157x43x23cm), 16kg

Detection:

DR Label: 2x80cm(Mono), 160cm(Master/Slave)

Mini Pencil: 2x120cm(Mono), 240cm(Master/Slave)

Max Pencil: 2x140cm(Mono), 280cm(Master/Slave)

Main Features

DSP (Digital Signal Processing) technology with high sensitivity.

Auto noise filtering to counter interference and minimize false alarm.

All electronics are integrated into antennas with no controller needed.

Easy installation and synchronization with all parameters tuned by software.

It can work as either Mono or Master/Slave version adjusted by software.

Audible and visual alarm indication with adjustable speaker and LED light.



SD-152(AM Plastic System)

Frequency: 58KHz

Material: ABS plastic frame with metal base cover.

Dimension: 153cm(Height), 40cm(Width), 3.5cm(Depth)

Packing:

Dual: 2pcs/ctn, 0.155cbm(157x43x23cm), 16kg

Detection:

DR Label: 2x80cm(Mono), 160cm(Master/Slave)

Mini Pencil: 2x120cm(Mono), 240cm(Master/Slave)

Max Pencil: 2x140cm(Mono), 280cm(Master/Slave)

Main Features

DSP (Digital Signal Processing) technology with high sensitivity.

Auto noise filtering to counter interference and minimize false alarm.

All electronics are integrated into antennas with no controller needed.

Easy installation and synchronization with all parameters tuned by software.

It can work as either Mono or Master/Slave version adjusted by software.

Audible and visual alarm indication with adjustable speaker and LED light.



SD-153(AM Plastic System)

Frequency: 58KHz
 Material: ABS plastic frame with metal base cover.
 Dimension: 157cm(Height), 43cm(Width), 3.5cm(Depth)
 Packing:
 Dual: 2pcs/ctn, 0.156cbm(161x44x22cm), 18kg

Detection:
 DR Label: 2x80cm(Mono), 160cm(Master/Slave)
 Mini Pencil: 2x120cm(Mono), 240cm(Master/Slave)
 Max Pencil: 2x140cm(Mono), 280cm(Master/Slave)

Main Features
 DSP (Digital Signal Processing) technology with high sensitivity.
 Auto noise filtering to counter interference and minimize false alarm.
 All electronics are integrated into antennas with no controller needed.
 Easy installation and synchronization with all parameters tuned by software.
 It can work as either Mono or Master/Slave version adjusted by software.
 Audible and visual alarm indication with adjustable speaker and LED light.



SD-153B(AM Plastic System)

Frequency: 58KHz
 Material: ABS plastic frame with metal base cover.
 Dimension: 157cm(Height), 43cm(Width), 3.5cm(Depth)
 Packing:
 Dual: 2pcs/ctn, 0.156cbm(161x44x22cm), 18kg

Detection:
 DR Label: 2x80cm(Mono), 160cm(Master/Slave)
 Mini Pencil: 2x120cm(Mono), 240cm(Master/Slave)
 Max Pencil: 2x140cm(Mono), 280cm(Master/Slave)

Main Features
 DSP (Digital Signal Processing) technology with high sensitivity.
 Auto noise filtering to counter interference and minimize false alarm.
 All electronics are integrated into antennas with no controller needed.
 Easy installation and synchronization with all parameters tuned by software.
 It can work as either Mono or Master/Slave version adjusted by software.
 Audible and visual alarm indication with adjustable speaker and LED light.



SD-155B(AM Plastic System)

Frequency: 58KHz
 Material: Fireproof ABS plastic frame with plastic base cover
 Color: White/Gray or Customized
 Dimension: 161cm(Height), 44cm(Width), 15cm(Depth), 11kg(Weight)

Packing: Mono: 1pc/ctn, 0.183cbm(164x53x21cm), 14kg
 Dual: 2pcs/ctn, 0.217cbm(164x53x25cm), 25kg

Detection: DR Label: 2x80cm(Mono), 160cm(Master/Slave)
 Mini Pencil: 2x120cm(Mono), 240cm(Master/Slave)
 Max Pencil: 2x140cm(Mono), 280cm(Master/Slave)

Main Features DSP (Digital Signal Processing) technology with high sensitivity.
 Auto noise filtering to counter interference and minimize false alarm.
 All electronics are integrated into antennas with no controller needed.
 Easy installation and synchronization with all parameters tuned by software.
 It can work as either Mono or Master/Slave version adjusted by software.
 Audible and visual alarm indication with adjustable speaker and LED light.



SD-156(AM Plastic System)

Frequency: 58KHz
Material: Fireproof ABS plastic frame with plastic base cover.
Color: White/Gray or Customized
Dimension: 139cm(Height), 35cm(Width), 14cm(Depth), 14kg(Weight)

Packing:
Mono: 1pc/ctn, 0.128cbm(150x45x19cm), 16kg
Dual: 2pcs/ctn, 0.149cbm(150x45x22cm), 30kg

Detection:
DR Label: 2x80cm(Mono), 160cm(Master/Slave)
Mini Pencil: 2x120cm(Mono), 240cm(Master/Slave)
Max Pencil: 2x140cm(Mono), 280cm(Master/Slave)

Main Features
DSP (Digital Signal Processing) technology with high sensitivity.
Auto noise filtering to counter interference and minimize false alarm.
All electronics are integrated into antennas with no controller needed.
Easy installation and synchronization with all parameters tuned by software.
It can work as either Mono or Master/Slave version adjusted by software.
Audible and visual alarm indication with adjustable speaker and LED light.



SD-159(AM Acrylic System)

Frequency: 58KHz
Material: High grade acrylic frame with stainless steel base cover.
Dimension: 150cm(Height), 39cm(Width), 2.5cm(Depth), 24kg(Weight)

Packing:
Mono: 1pc/ctn, 0.131cbm(160x48x17cm), 25kg

Detection:
DR Label: 2x80cm(Mono), 160cm(Master/Slave)
Mini Pencil: 2x100cm(Mono), 200cm(Master/Slave)
Max Pencil: 2x110cm(Mono), 220cm(Master/Slave)

Main Features
DSP (Digital Signal Processing) technology with high sensitivity.
Auto noise filtering to counter interference and minimize false alarm.
All electronics are integrated into antennas with no controller needed.
Easy installation and synchronization with all parameters tuned by software.
It can work as either Mono or Master/Slave version adjusted by software.
Audible and visual alarm indication with adjustable speaker and LED light.



SD-161(AM Plastic System)

Frequency: 58KHz
Material: Fireproof ABS plastic frame with plastic base cover.
Dimension: 150cm(Height), 41cm(Width), 13cm(Depth), 17kg(Weight)

Packing:
Dual: 2pcs/ctn, 0.207cbm(153x52x26cm), 18kg

Detection:
DR Label: 2x80cm(Mono), 160cm(Master/Slave)
Mini Pencil: 2x100cm(Mono), 200cm(Master/Slave)
Max Pencil: 2x110cm(Mono), 220cm(Master/Slave)

Main Features
DSP (Digital Signal Processing) technology with high sensitivity.
Auto noise filtering to counter interference and minimize false alarm.
All electronics are integrated into antennas with no controller needed.
Easy installation and synchronization with all parameters tuned by software.
It can work as either Mono or Master/Slave version adjusted by software.
Audible and visual alarm indication with adjustable speaker and LED light.



SD-162(AM Plastic System)

Frequency: 58KHz
Material: Fireproof ABS plastic frame with plastic base cover.
Dimension: 156cm(Height), 51cm(Width), 2.5cm(Depth)

Packing:
Mono: 1pc/ctn, 0.103cbm(162x49x13cm), 10.5kg
Dual: 2pcs/ctn, 0.225cbm(163x60x23cm), 21kg

Detection:
DR Label: 2x80cm(Mono), 160cm(Master/Slave)
Mini Pencil: 2x100cm(Mono), 200cm(Master/Slave)
Max Pencil: 2x110cm(Mono), 220cm(Master/Slave)

Main Features
DSP (Digital Signal Processing) technology with high sensitivity.
Auto noise filtering to counter interference and minimize false alarm.
All electronics are integrated into antennas with no controller needed.
Easy installation and synchronization with all parameters tuned by software.
It can work as either Mono or Master/Slave version adjusted by software.
Audible and visual alarm indication with adjustable speaker and LED light.



SD-162B(AM Glass Fiber)

Frequency: 58KHz
Material: Glass fiber frame with plastic base cover.
Dimension: 156cm(Height), 51cm(Width), 2.5cm(Depth)

Packing:
Mono: 1pc/ctn, 0.103cbm(162x49x13cm), 10.5kg
Dual: 2pcs/ctn, 0.225cbm(163x60x23cm), 21kg

Detection:
DR Label: 2x80cm(Mono), 160cm(Master/Slave)
Mini Pencil: 2x100cm(Mono), 200cm(Master/Slave)
Max Pencil: 2x110cm(Mono), 220cm(Master/Slave)

Main Features
DSP (Digital Signal Processing) technology with high sensitivity.
Auto noise filtering to counter interference and minimize false alarm.
All electronics are integrated into antennas with no controller needed.
Easy installation and synchronization with all parameters tuned by software.
It can work as either Mono or Master/Slave version adjusted by software.
Audible and visual alarm indication with adjustable speaker and LED light.



SD-163(AM Plastic System)

Frequency: 58KHz
Main Material: ABS Plastic
Dimension: 156cm(Height), 42cm(Width), 4cm(Depth)

Packing:
Dual: 2pcs/ctn, 0.103cbm(157.5x45x14.5cm), 14kg

Main Features:
Test distance up to 1.5-3.2M(label related)
Technical support: AM1090
Add new passenger flow counter system.
The number of people in and out will be counted separately.
And can use mobile phone remote debugging products.
Single, dual and multiple systems available
Lable for all 58 kHz



SD-164(AM Plastic System)

Frequency: 58KHz
Material: Fiber reinforced plastic frame with fiber reinforced plastic base cover.
Dimension: 155cm(Height), 50cm(Width), 13cm(Depth), 11.40kg(Weight)

Packing:
Mono: 1pc/ctn, 0.153cbm(159x60x16cm), 11.4kg
Dual: 2pcs/ctn, 0.248cbm(159x60x26cm), 22.8kg

Detection:
DR Label: 2x80cm(Mono), 160cm(Master/Slave)
Mini Pencil: 2x100cm(Mono), 200cm(Master/Slave)
Max Pencil: 2x110cm(Mono), 220cm(Master/Slave)

Main Features
DSP (Digital Signal Processing) technology with high sensitivity.
Auto noise filtering to counter interference and minimize false alarm.
All electronics are integrated into antennas with no controller needed.
Easy installation and synchronization with all parameters tuned by software.
It can work as either Mono or Master/Slave version adjusted by software.
Audible and visual alarm indication with adjustable speaker and LED light.



SD-165(AM/RF Plastic System)

Frequency: 58KHz/8.2MHz
Material: Fireproof ABS plastic frame with metal base cover.
Dimension: 168cm(Height), 39cm(Width), 12cm(Depth), 9.88kg(Weight)

Packing:
Mono: 1pc/ctn, 0.105cbm(175x46x13cm), 10kg
Dual: 2pcs/ctn, 0.185cbm(175x46x23cm), 20kg
Detection:
DR Label: 2x80cm(Mono), 160cm(Master/Slave)
Mini Pencil: 2x100cm(Mono), 200cm(Master/Slave)
Max Pencil: 2x110cm(Mono), 220cm(Master/Slave)

RF Label(4x4): 2x90cm (Mono), 150cm (Dual)
Mini Tag(Mini Square): 2x120cm (Mono), 170cm (Dual)
Midi Tag(R50): 2x140cm (Mono), 190cm (Dual)
Max Tag(Alpha): 2x160cm(Mono), 210cm(Dual)

Main Features
DSP (Digital Signal Processing) technology with high sensitivity.
Auto noise filtering to counter interference and minimize false alarm.
All electronics are integrated into antennas with no controller needed.
Easy installation and synchronization with all parameters tuned by software.
It can work as either Mono or Master/Slave version adjusted by software.
Audible and visual alarm indication with adjustable speaker and LED light.



SD-166(AM Plastic System)

Frequency: 58KHz
Material: ABS plastic& acrylic
Dimension: 155.5cm(Height), 38.5cm(Width), 4.5cm(Depth), 15kg(Weight)

Packing:
Mono: 1pcs/ctn, 0.137cbm(162x47x18cm), 17.5kg

Detection:
DR Label: 2x70cm(Mono), 140cm(Master/Slave)
Mini Pencil: 2x95cm(Mono), 190cm(Master/Slave)
Mid Pencil: 2x110cm(Mono), 220cm(Master/Slave)
Mid Pencil: 2x120cm(Mono), 240cm(Master/Slave)
Max Pencil: 2x140cm(Mono), 280cm(Master/Slave)

Main Features
Suitable for all retail stores, suitable for channel protection.
High quality ABS material, imported acrylic board embedded, advertising can be inserted
Controller inside the antenna, no need outside controller.
Easy for installation, it is a plug and play equipment.
Simply installation, software debugging, low false-alarm rate, easy to maintain



SD-169(AM Plastic System)

Frequency: 58KHz

Material: ABS plastic

Dimension: 156cm(Height), 43cm(Width), 2.5cm(Depth)

Packing:

Dual: 2pcs/ctn, 0.172cbm(161×51×21cm), 12.5kg

Main Features

DSP (Digital Signal Processing) technology with high sensitivity.

Auto noise filtering to counter interference and minimize false alarm.

All electronics are integrated into antennas with no controller needed.

Easy installation and synchronization with all parameters tuned by software.

It can work as either Mono or Master/Slave version adjusted by software.

Audible and visual alarm indication with adjustable speaker and LED light.



SD-170(AM Plastic System)

Frequency: 58KHz

Material: ABS plastic

Dimension: 155.7cm(Height), 41cm(Width), 2.8cm(Depth)

Packing:

Dual: 2pcs/ctn, 0.194cbm(158×49×25cm), 14kg

Main Features

DSP (Digital Signal Processing) technology with high sensitivity.

Auto noise filtering to counter interference and minimize false alarm.

All electronics are integrated into antennas with no controller needed.

Easy installation and synchronization with all parameters tuned by software.

It can work as either Mono or Master/Slave version adjusted by software.

Audible and visual alarm indication with adjustable speaker and LED light.



W-150(with WD-555 boards)

Material: high quality imported ABS

Frequency: 58KHz

Dimension: 159.7cm(Height), 42cm(Width), 3cm(Depth), 7kg(Weight)

Packing:

Mono: 1pc/ctn, 0.103cbm(161×44×14.5cm), 8.6kg

Dual: 2pcs/ctn, 0.163cbm(161×44×23cm), 14.4kg

Detection:

AM DR Label: ≥90cm(Mono), ≥180cm(Dual)

AM 39mm ferrite pencil tag: ≥140cm(Mono), ≥260cm(Dual)

AM 50mm ferrite super tag: ≥160cm(Mono), ≥300cm(Dual)

Main Features

high quality imported ABS, delicate texture, ageing resistance and fadeless

DSP (Digital Signal Processing) technology with high sensitivity.

Portable remote control debugging with free conversion mode

No need to debug through computer software

Auto noise filtering to counter interference and minimize false alarm.

All electronics are integrated into antennas with no controller needed.

Easy installation and synchronization with all parameters tuned by remote control.

It can work as Mono/Dual/Multi version adjusted by remote control.

Audible and visual alarm indication by LED light on top.

Window alarm counter at bottom to count the alarming number of times.



W-160B(with WD-555 boards)

Material: Imported high quality acrylic

Frequency: 58KHz

Dimension: 152.8cm(Height), 40cm(Width), 2cm(Depth), 15.5kg(Weight)

Packing:

Mono: 1pc/ctn, 0.131cbm(160x48x17cm), 20kg

Detection:

AM DR Label: ≥ 90 cm(Mono), ≥ 180 cm(Dual)

AM 39mm ferrite pencil tag: ≥ 140 cm(Mono), ≥ 260 cm(Dual)

AM 50mm ferrite super tag: ≥ 160 cm(Mono), ≥ 300 cm(Dual)

Main Features

Imported acrylic material, crystal clear appearance, beautiful and simple,

fire-resistant, high temperature-resistant, never deformation

DSP (Digital Signal Processing) technology with high sensitivity.

Equipped with the most advance WD-555 AM boards with stable performance

Portable remote control debugging with free conversion mode

No need to debug through computer software

Auto noise filtering to counter interference and minimize false alarm.

All electronics are integrated into antennas with no controller needed.

Easy installation and synchronization with all parameters tuned by remote control.

It can work as Mono/Dual/Multi version adjusted by remote control.

Audible and visual alarm indication by LED light on top.

Window alarm counter at bottom to count the alarming number of times.



W-220(with WD-333 boards)

Material: high quality imported ABS

Frequency: 58KHz

Dimension: 152.5cm(Height), 40cm(Width), 3.5cm(Depth), 7.7kg(Weight)

Packing:

Mono: 1pc/ctn, 0.087cbm(153x42x13.5cm), 7.7kg

Dual: 2pcs/ctn, 0.135cbm(153x42x21cm), 12.8kg

Detection:

AM DR Label: ≥ 90 cm(Mono), ≥ 180 cm(Dual)

AM 39mm ferrite pencil tag: ≥ 140 cm(Mono), ≥ 260 cm(Dual)

AM 50mm ferrite super tag: ≥ 160 cm(Mono), ≥ 300 cm(Dual)

Main Features

high quality imported ABS, delicate texture, ageing resistance and fadeless

DSP (Digital Signal Processing) technology with high sensitivity.

Portable remote control debugging with free conversion mode

No need to debug through computer software

Auto noise filtering to counter interference and minimize false alarm.

All electronics are integrated into antennas with no controller needed.

Easy installation and synchronization with all parameters tuned by remote control.

It can work as Mono/Dual/Multi version adjusted by remote control.

Audible and visual alarm indication by LED light on top.

Window alarm counter at bottom to count the alarming number of times.



W-280(with WD-666 boards)

Material: high quality imported ABS

Frequency: 58KHz

Dimension: 156cm(Height), 41.8cm(Width), 3.2cm(Depth), 8.1kg(Weight)

Packing:

Mono: 1pc/ctn, 0.097cbm(156x43x14.5cm), 8.1kg

Dual: 2pcs/ctn, 0.148cbm(156x43x22cm), 13.6kg

Detection:

AM DR Label: ≥ 90 cm(Mono), ≥ 180 cm(Dual)

AM 39mm ferrite pencil tag: ≥ 140 cm(Mono), ≥ 260 cm(Dual)

AM 50mm ferrite super tag: ≥ 160 cm(Mono), ≥ 300 cm(Dual)

Main Features

high quality imported ABS, delicate texture, ageing resistance and fadeless

DSP (Digital Signal Processing) technology with high sensitivity.

Portable remote control debugging with free conversion mode

No need to debug through computer software

Auto noise filtering to counter interference and minimize false alarm.

All electronics are integrated into antennas with no controller needed.

Easy installation and synchronization with all parameters tuned by remote control.

It can work as Mono/Dual/Multi version adjusted by remote control.

Audible and visual alarm indication by LED light on top.

Window alarm counter at bottom to count the alarming number of times.



W-320(with F-22 boards)

Material: Acrylic
Frequency: 58KHz
Dimension: 145cm(Height), 32cm(Width), 2cm(Depth), 12kg(Weight)

Packing:
Mono: 1pc/ctn, 0.087cbm(150x34x17cm), 18kg

Detection:
AM DR Label: $\geq 90\text{cm}$ (Mono), $\geq 180\text{cm}$ (Dual)
AM 39mm ferrite pencil tag: $\geq 140\text{cm}$ (Mono), $\geq 260\text{cm}$ (Dual)
AM 50mm ferrite super tag: $\geq 160\text{cm}$ (Mono), $\geq 300\text{cm}$ (Dual)

Main Features
Imported acrylic material, crystal clear appearance, beautiful and simple,
fire-resistant, high temperature-resistant, never deformation
DSP (Digital Signal Processing) technology with high sensitivity.
Portable remote control debugging with free conversion mode
No need to debug through computer software
Auto noise filtering to counter interference and minimize false alarm.
All electronics are integrated into antennas with no controller needed.
Easy installation and synchronization with all parameters tuned by remote control.
It can work as either Mono/Dual/Multi version adjusted by remote control.
Audible and visual alarm indication by LED light on top.
Window alarm counter at bottom to count the alarming number of times.



W-400(with WD-888 boards)

Material: high quality imported ABS
Frequency: 58KHz
Dimension: 161.3cm(Height), 46cm(Width), 3.2cm(Depth), 9kg(Weight)

Packing:
Mono: 1pc/ctn, 0.115cbm(162.5x47x15cm), 9kg
Dual: 2pcs/ctn, 0.172cbm(162.5x47x22.5cm), 15kg

Detection:
AM DR Label: $\geq 90\text{cm}$ (Mono), $\geq 180\text{cm}$ (Dual)
AM 39mm ferrite pencil tag: $\geq 140\text{cm}$ (Mono), $\geq 260\text{cm}$ (Dual)
AM 50mm ferrite super tag: $\geq 160\text{cm}$ (Mono), $\geq 300\text{cm}$ (Dual)

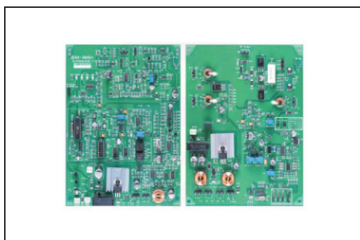
Main Features
high quality imported ABS, delicate texture, ageing resistance and fadeless
DSP (Digital Signal Processing) technology with high sensitivity.
Portable remote control debugging with free conversion mode
No need to debug through computer software
Auto noise filtering to counter interference and minimize false alarm.
All electronics are integrated into antennas with no controller needed.
Easy installation and synchronization with all parameters tuned by remote control.
It can work as Mono/Dual/Multi version adjusted by remote control.
Audible and visual alarm indication by LED light on top.
Window alarm counter at bottom to count the alarming number of times.



SD-901(Intelligent Sensing Door)

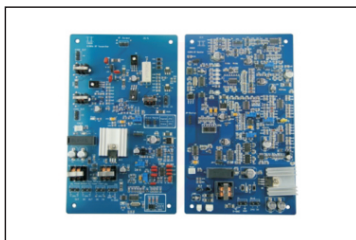
Material: 304
Chassis size: 180mmx240mmx1070mm
Packing: Customized

Produc parameters
Working voltage: 110-220V
Drive motor: 24V DC Brushless
Traffic speed: 40persons/min
Switching time: 2-10seconds adjustable
Swing direction: One way or two way
Swing arm length: 860mm
Maximum bearing capacity of swing arm: 30kg
Swing arm rotation Angle: 90°
Switch counting display function maximum count 999999.
Gate opening and closing time: 1-2seconds
Time required to enter the current state after power-on: 3seconds
Automatic reset time after failure: 10seconds



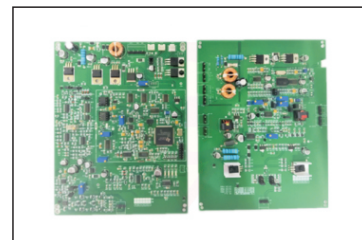
SD-401(3800)(TX/RX Board)

Frequency: 8.2MHz
Dimension: 196mmx150mm
Packing: Customized
Description: DSP technology, wide detection, self adjusting to enviroment, auto noise filtering.



SD-402(3920)(TX/RX Board)

Frequency: 8.2MHz
Dimension: 120mmx195mm
Packing: Customized
Description: High sensitivity, self adjusting to enviroment, auto noise filtering.



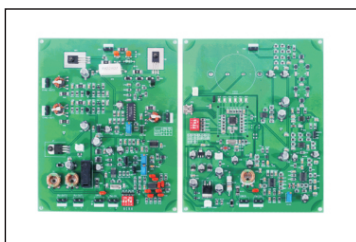
SD-403(4900)(TX/RX Board)

Frequency: 8.2MHz
Dimension: 192mmx148mm
Packing: Customized
Description: DSP technology, wide detection, self adjusting to enviroment, auto noise filtering.



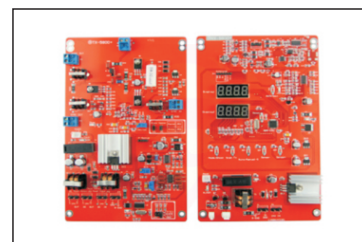
SD-403B(4901)(Small Match Board)

Frequency: 8.2MHz
Dimension: 100mmx50mm
Packing: Customized
Description: DSP technology, wide detection, self adjusting to enviroment, auto noise filtering.



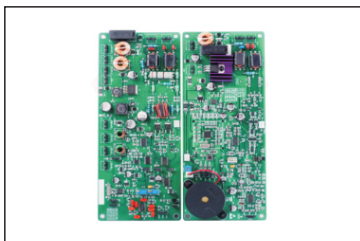
SD-404(5500/9530C)(TX/RX Board)

Frequency: 8.2MHz
Dimension: 200mmx160mm
Packing: 20sets/ctn, 0.040cbm (40x42x24cm), 7kg
Description: High sensitivity, self adjusting to enviroment, auto noise filtering.



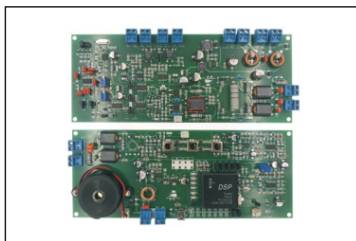
SD-405(5800)(TX/RX Board)

Frequency: 8.2MHz
Dimension: 200mmx120mm
Packing: 20sets/ctn, 0.040cbm (40x42x24cm), 7kg
Description: DSP technology, high sensitivity, self adjusting to enviroment, auto noise filtering.



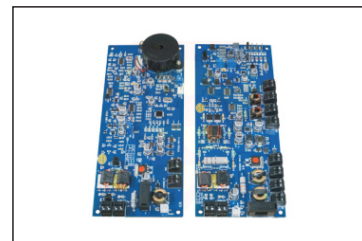
SD-406(5900)(TX/RX Board)

Frequency: 8.2MHz
Dimension: 215mmx87mm
Packing: Customized
Description: DSP technology, wide detection, self adjusting to enviroment, auto noise filtering.



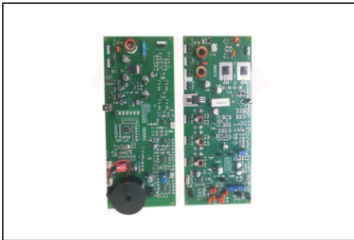
SD-407(95100/5920)(TX/RX Board)

Frequency: 8.2MHz
Dimension: 217mmx87mm
Packing: Customized
Description: High sensitivity, self adjusting to enviroment, auto noise filtering.



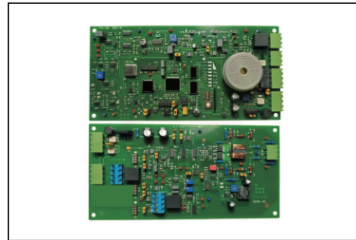
SD-407B(TST5000/9500)(TX/RX Board)

Frequency: 8.2MHz
Dimension: 215mmx86mm
Packing: 20sets/ctn, 0.040cbm (40x42x24cm), 7kg
Description: DSP technology, high sensitivity, self adjusting to enviroment, auto noise filtering.



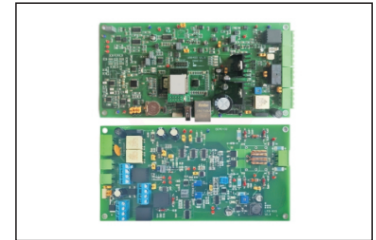
SD-408(5600/9590)(TX/RX Board)

Frequency: 8.2MHz
Dimension: 217mmx87mm
Packing: Customized
Description: High sensitivity, self adjusting to enviroment, auto noise filtering.



UTB 200/URB 100(TX/RX Board)

Frequency: 8.2MHz
Dimension: 200mmx100mm
Packing: Customized
Description: Good Performance RF TX/RX electronics, manual tuning, wire TX-synchronization.



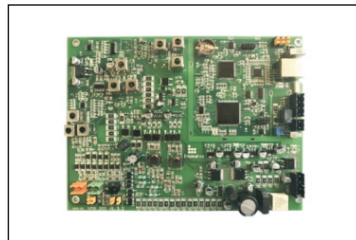
UTB 400/URB 400(TX/RX Board)

Frequency: 8.2MHz
Dimension: 200mmx100mm
Packing: Customized
Description: High Performance RF TX/RX electronics, software tuning, internet access, wire TX-synchronization.



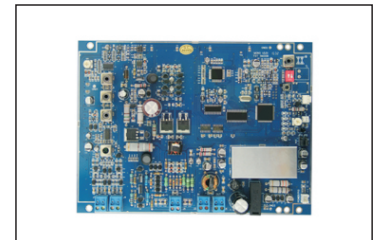
ACA 100(Small Match Board)

Frequency: 8.2MHz
Dimension: 127mmx50mm
Packing: Customized
Description: Matching board for RF TX/RX boards/antenna (each TX and RX requires one matching board).



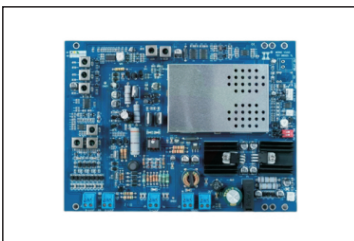
UMB 200P(Mono Board)

Frequency: 8.2MHz
Dimension: 218mmx160mm
Packing: Customized
Description: High Performance RF Mono electronics, software tuning, internet access, auto-synchronization.



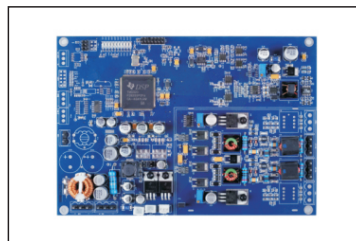
SD-502(9600B)(Mono Board)

Frequency: 8.2MHz
Dimension: 200mmx160mm
Packing: 10pcs/ctn, 0.019cbm (40x20x24cm), 4kg
Description: DSP technology, high sensitivity, no false alarming, auto sychronization, near tag distinguishing.



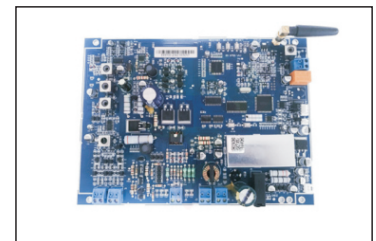
SD-502B(9600S)(Mono Board)

Frequency: 8.2MHz
Dimension: 200mmx160mm
Packing: 10pcs/ctn, 0.019cbm (40x20x24cm), 4kg
Description: DSP technology, high sensitivity, no false alarming, auto sychronization, near tag distinguishing.



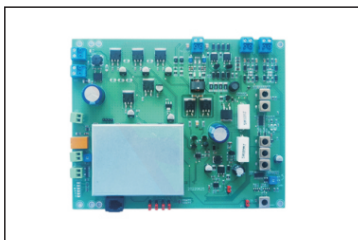
SD-503(5200)(Mono Board)

Frequency: 8.2MHz
Dimension: 210mmx150mm
Packing: 10pcs/ctn, 0.019cbm (40x20x24cm), 4kg
Description: DSP technology, high sensitivity, no false alarming, auto sychronization, near tag distinguishing.



SD-504(EX9700)(Mono Board)

Frequency: 8.2MHz
Dimension: 210mmx154mm
Packing: 20pcs/ctn, 0.039cbm (36x36x30cm), 6.2kg
Description: DSP technology, high sensitivity, no false alarming, auto sychronization, near tag distinguishing.



SD-505(RF001ZB)(Mono Board)

Frequency: 8.2MHz

Dimension: 200mmx155mm

Packing: Customized

Description: DSP technology, high sensitivity, no false alarming, auto synchronization, near tag distinguishing.



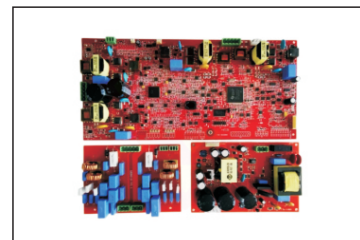
SD-505B(RF201ZB)(Mono Board)

Frequency: 8.2MHz

Dimension: 200mmx155mm

Packing: Customized

Description: DSP technology, high sensitivity, no false alarming, auto synchronization, near tag distinguishing.



SD-603B(AM Board)

Frequency: 58KHz

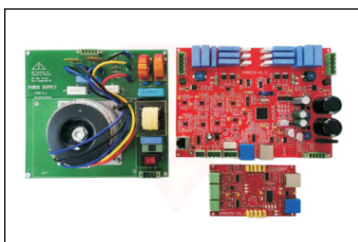
Dimension: 322mmx150.5mm(Main Board)

145mmx102mm(Matching Board)

165mmx107mm(Matching Board)

Packing: Customized

Description: DSP technology, high sensitivity, self adjusting to enviroment, auto noise filtering.



SD-604B(AM Board Pro)

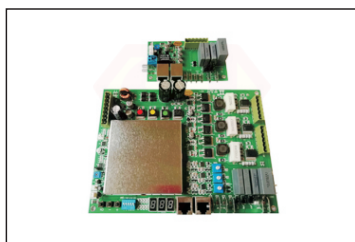
Frequency: 58KHz

Dimension: 195mmx137mm(Main Board)

107mmx63mm(Matching Board)

Packing: Customized

Description: DSP technology, high sensitivity, self adjusting to enviroment, auto noise filtering.



SD-605(TST1050/AMA)(AM Board)

Frequency: 58KHz

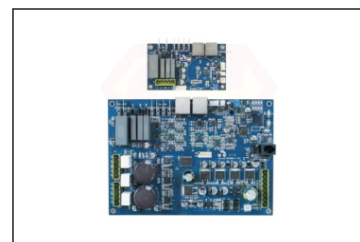
Dimension: 210mmx150mm(Main Board)

110mmx60mm(Matching Board)

Packing: 20sets/ctn, 0.04cbm

(36x36x29.5cm), 7kg

Description: High sensitivity, self adjusting to enviroment, auto noise filtering.



SD-606(EX 1800)(AM Board)

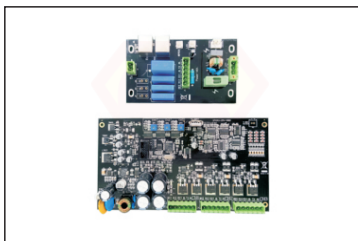
Frequency: 58KHz

Dimension: 185mmx130mm(Main Board)

110mmx650mm(Matching Board)

Packing: Customized.

Description: High sensitivity, self adjusting to enviroment, auto noise filtering.



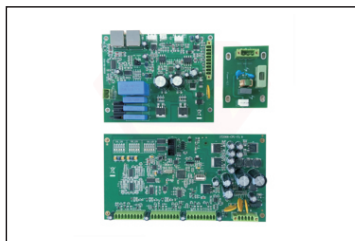
SD-607(ST1000)(AM Board)

Frequency: 58KHz

Dimension: 200mmx110mm(Main Board)

Packing: Customized.

Description: High sensitivity, self adjusting to enviroment, auto noise filtering.



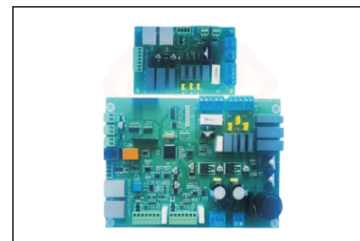
SD-608(ST2000)(AM Board)

Frequency: 58KHz

Dimension: 200mmx110mm(Main Board)

Packing: Customized.

Description: High sensitivity, self adjusting to enviroment, auto noise filtering.



SD-609(AM001ZB)(AM Board)

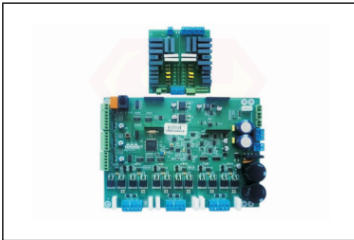
Frequency: 58KHz

Dimension: 180mmx125mm(Main Board)

120mmx80mm(Matching Board)

Packing: Customized

Description: High sensitivity, self adjusting to enviroment, auto noise filtering.



SD-609B(AM2012B)(AM Board Pro)

Frequency: 58KHz
Dimension: 205mmx145mm(Main Board)
121mmx118mm(Matching Board)
Packing: Customized
Description: High sensitivity, self adjusting to enviroment, auto noise filtering.



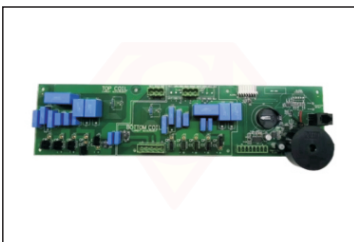
SD-609C(Metal Detection Board)

Frequency: 58KHz
Dimension: 118mmx108mm(Main Board)
70mmx45mm(Matching Board)
Packing: Customized
Description: High sensitivity, self adjusting to enviroment, auto noise filtering.



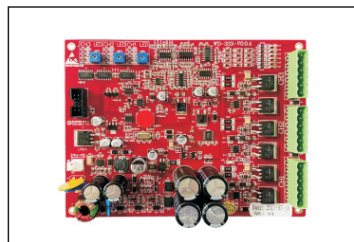
SD-701(Control Box)

Frequency: 58KHz
Dimension: 445mmx340mmx95mm
Packing: Customized



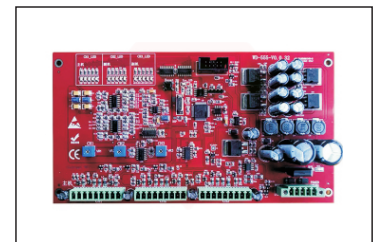
SD-701B(Match Board)

Frequency: 58KHz
Dimension: 300mmx80mm
Packing: Customized
Description: High sensitivity, self adjusting to enviroment, auto noise filtering.



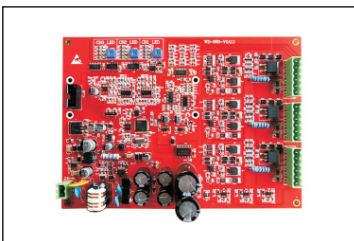
WD-333(AM Board)

Frequency: 58KHz
Dimension: 170mmx130mm
Packing: Customized
Description: DSP technology, high sensitivity, the cost-effective AM board with good performance, wide detection.



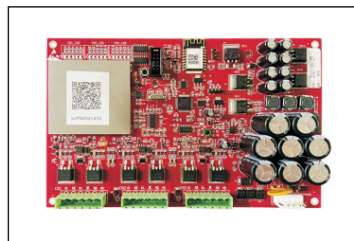
WD-555(AM Board)

Frequency: 58KHz
Dimension: 200mmx150mm
Packing: Customized
Description: DSP technology, high sensitivity, advanced AM board with good performance, wide detection.



WD-666(AM Board)

Frequency: 58KHz
Dimension: 200mmx147mm
Packing: Customized
Description: DSP technology, high sensitivity, the cost-effective AM board with good performance, wide detection.



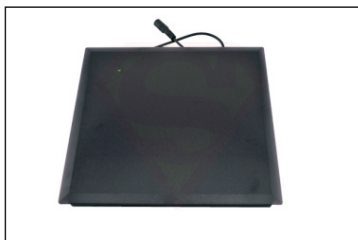
WD-888(AM Board)

Frequency: 58KHz
Dimension: 200mmx130mm
Packing: Customized
Description: DSP technology, high sensitivity, the cost-effective AM board with good performance, wide detection.



SD-201(RF Deactivator)

Frequency: 8.2MHz
 Dimension: 245mmx235mm
 Color: Black
 Packing: 10pcs/ctn, 0.057cbm
 (43x36x37cm), 10kg
 Description: Digital intergated deactivator with pad into one unit. It gives instant beep with visual indication once labels are killed and continous beep if labels can't be killed.



SD-201B(RF Deactivator)

Frequency: 8.2MHz
 Dimension: 220mmx220mm
 Color: Dark Purple
 Packing: 10pcs/ctn, 0.045cbm
 (50x25x36cm), 11.5kg
 Description: Digital intergated deactivator with pad into one unit. It gives instant beep with visual indication once labels are killed and continous beep if labels can't be killed.



SD-201C(RF Deactivator)

Frequency: 8.2MHz
 Dimension: 234mmx204mmx55mm
 Color: Dark Purple
 Packing: Customized.
 Description: Digital intergated deactivator with pad into one unit. It gives instant beep with visual indication once labels are killed continous beep if labels can't be killed.



SD-202B(RF Deactivator)

Frequency: 8.2MHz
 Dimension: 240mmx240mm
 Color: Black
 Packing: Customized



SD-202C(RF Scanning Deactivator)

Frequency: 8.2MHz
 Dimension: 196mmx55mmx24mm(Deactivator)
 300mmx350mmx15mm(Board)
 Color: Black
 Packing: Customized
 Description: Digital intergated deactivator with pad into one unit. It gives instant beep with visual indication once labels are killed and continous beep if labels can't be killed.



SD-202D(RF Deactivator)

Frequency: 8.2MHz
 Dimension: 220mmx220mmx22mm (Deactivator)
 176mmx106mmx57mm (Board)
 Color: Black
 Packing: 20sets/ctn, 0.046cbm
 (50x25x37cm), 6kg (Deactivator)
 10sets/ctn, 0.042cbm
 (40x40x26cm), 11.4kg (Board)
 Description: Digital intergated deactivator with pad into one unit. It gives instant beep with visual indication once labels are killed and continous beep if labels can't be killed.



SD-203(AM Deactivator)

Frequency: 58K
 Dimension: 230mmx190mmx55mm
 Color: Gray
 Packing: 10sets/ctn, 0.101cbm
 (89x29.4x38.6cm), 21.6kg
 Description: Detect at 15cm and deactivate at 10cm. Audible and visual indication of deactivation. Plug and play allow for table top and flush mounting.



SD-204(AM Deactivator)

Frequency: 58KHz
 Dimension: 215mmx190mmx60mm
 Color: Grey
 Packing: 6sets/ctn, 0.078cbm
 (34x58x40cm), 12.5kg
 Description: Detect at 15cm and deactivate at 10cm. Audible and visual indication of deactivation. Plug and play allow for table top and flush mounting.



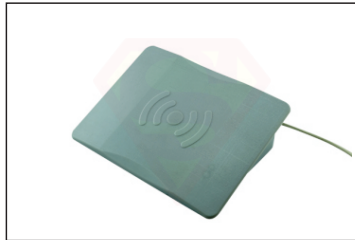
SD-205(AM Deactivator)

Frequency: 58KHz
 Dimension: 530mmx370mmx170mm
 Color: Black
 Packing: 1set/ctn, 0.017cbm
 (31x31x18cm), 3.5kg
 Description: Detect at 15cm and deactivate at 10cm. Audible and visual indication of deactivation. The deactivator and pad are separated.



SD-207(AM Deactivator)

Frequency: 58KHz
Dimension: 230mmx200mmx55mm
Color: Grey
Packing: 10sets/ctn, 0.095cbm
(58x34.5x47.5cm), 14.85kg



SD-208(AM Deactivator)

Frequency: 58KHz
Dimension: 133mmx184mm
Color: Grey
Packing: 20sets/ctn, 0.048cbm
(47.5x26x39cm), 12.6kg



SD-209(AM Deactivator)

Frequency: 58KHz
Dimension: 293mmx235mmx85mm
Color: Grey
Packing: 10sets/ctn, 0.067cbm
(87*30.8*25cm), 12kg



SD-210(AM Deactivator)

Frequency: 58KHz
Dimension: 234mmx204mmx19mm
Color: Black
Packing: 10sets/ctn, 0.060cbm
(70*34.5*25cm), 13.6kg



SD-211(AM Deactivator)

Frequency: 58MHz
Dimension: 234mmx204mmx19mm (Deactivator)
236.2mmx167.5mmx55.5mm (Board)
Color: Black
Packing: 19sets/ctn, 0.033cbm
(50.5*27.5*24cm), 12.1kg (Deactivator)
6sets/ctn, 0.042cbm
(48.5*31*28cm), 15.6kg (Board)



SD-301(RF/AM Verifier)

Frequency: 8.2MHz/58KHz
Dimension: 345mmx75mm
Color: Black
Packing: 50pcs/ctn, 0.075cbm
(58x35x37cm), 8kg
Description: Detect up to 20cm for RF labels
and 10cm for AM labels. Audible and visual
indication of detection.



SD-301C(RF/AM Verifier)

Frequency: 58khz/8.2mhz
Dimension: 280mmx60mm
Color: Black
Packing: 50pcs/ctn, 0.053cbm
(46x32x36cm), 11.5kg
Description: test the tag or label before
using, and test the suspect customer
without touch the body



SD-301D(RF/AM Verifier)

Frequency: 8.2MHz/58KHz
Dimension: 140mmx62mm
Color: White
Packing: Customized
Description: Detect up to 20cm for RF labels
and 10cm for AM labels. Audible and visual
indication of detection.



SD-302(RF Verifier)

Frequency: 8.2MHz
Dimension: 200mmx85mm
Color: White
Packing: 100pcs/ctn, 0.075cbm
(58x35x37cm), 15kg
Description: Detect up to 20cm for RF labels.
Audible and visual indication of detection.



SD-302B(RF Hand Deactivator)

Frequency: 8.2MHz
 Dimension: 280mmx70mmx33mm
 Color: Black
 Packing: 10pcs/ctn, 0.073cbm
 (42x42x41cm), 6kg
 Description: Detect up to 20cm and Deactivate up to 15cm for RF labels. Audible and visual indication of detection and deactivation.
 Rechargeable battery.



SD-302C(Hand Deactivator)

Frequency: 8.2MHz/58KHz
 Dimension: 410mmx82mmx42mm
 Color: Black
 Packing: Customized



SD-302D(Hand Deactivator)

Frequency: 8.2MHz/58KHz
 Dimension: 340mmx80mmx55mm
 Color: Black
 Packing: Customized



SD-303(AM Manual Detacher)

Frequency: 58KHz
 Dimension: 185mmx90mm
 Color: Gray
 Packing: 10pcs/ctn, 0.034cbm
 (42x30x27cm), 5.5kg
 Volume weight: 7.9kg



SD-303B(AM Table Top)

Frequency: 58KHz
 Dimension: 150mmx102mm
 Color: Gray
 Packing: 5sets/ctn, 0.02cbm
 (49x20x20cm), 8.5kg



SD-303C(AM Flush Mount)

Frequency: 58KHz
 Dimension: 220mmx180mm
 Color: Gray
 Packing: 5sets/ctn, 0.040cbm
 (46.8x32.2x26.6cm), 8.5kg



SD-303D(AM hand Flush Mount)

Frequency: 58KHz
 Dimension: 220mmxφ87mm
 Color: Gray
 Packing: 5sets/ctn, 0.071cbm
 (57x36x35cm), 7kg



SD-304(AM Touch Pad)

Frequency: 58KHz
 Dimension: 155mmx105mmx7mm
 Color: Black
 Packing: 100pcs/ctn, 0.02cbm
 (42x28x18cm), 23kg



SD-305(People Counter)

Dimension: 112mmx65mm
 Color: White
 Packing: 25pcs/ctn, 0.026cbm
 (35x30x25cm), 6kg
 Description: Automatically tracking the number of visitors. Traffic data on desktop display for immediate inquiry. Capable to combine with EAS System during installation.



SD-306(WG Double Checker)

Frequency: 58KHz
Dimension: 340mmx250mmx25mm
Color: White
Packing: Customized
Description: Detect both hard tags and AM labels up to 20cm. Contact degaussing function.



SD-307(Manual Large Micro Gator Detacher)

Frequency: 58KHz
Dimension: 245mmx114mmx75mm
Color: White
Packing: 20pcs/ctn, 0.032cbm
(50x40x16cm), 10kg.



SD-307B(Power Gator Detacher)

Frequency: 58KHz
Dimension: 166mmx130mmx90mm
Color: Gray
Packing: Customized



SD-308(RF Antenna Tester)

Frequency: 8.2MHz
Dimension: 175mmx60mm
Color: Black
Packing: 100pcs/ctn, 0.075cbm
(58x35x37cm), 12kg
Description: To adjust RF system by putting the tester close to TX Antenna with accuracy rate around 1% in tolerance.



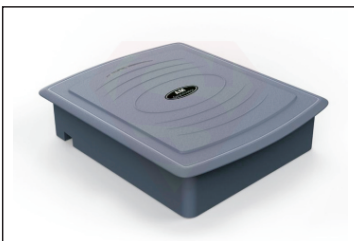
SD-309(RF Tag Tester)

Frequency: 8.2MHz
Dimension: 150mmx110mm
Color: White
Packing: Customized



SD-310(AM Deactivator)

Frequency: 58KHz
Dimension: 350mmx140mm
Color: Black
Packing: Customized



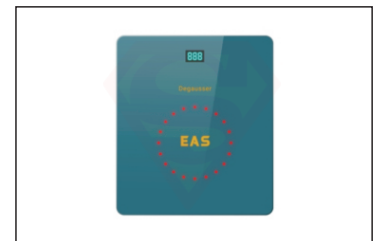
WD-700X(AM Deactivator)

Frequency: 58KHz
Dimension: 245mmx204mmx58mm
Color: Grey
Packing: 10pcs/ctn, 0.099cbm
(90x29x38cm), 21.7kg



WD-800(AM Deactivator)

Frequency: 58KHz
Dimension: 241mmx201mmx58mm
Color: Grey
Packing: 10pcs/ctn, 0.099cbm
(90x29x38cm), 21.7kg



XG-999(AM Deactivator)

Frequency: 58KHz
Color: Blue/Green
Dimension: 230mmx200mmx55mm
Packing: 10pcs/ctn, 0.064cbm
(83.5x25.5x30.5cm), 14.5kg



T-110(Box Guard)

Frequency: 8.2MHz/58KHz
Spec: Dual Alarm/Triple Alarm
Dimension: 73mmx58mm
Color: Black/White/Black or Customized
Lock: Magnetic Lock
Pulling Force: 25kgs
Packing: 100pcs/ctn, 0.0351cbm
(38x28x33cm), 12.2kg



T-110B(Mini Box Guard)

Frequency: 8.2MHz/58KHz
Spec: Dual Alarm/Triple Alarm
Dimension: 50mmx60mm
Color: Gray/White/Black or Customized
Lock: Magnetic Lock
Pulling Force: 20kgs
Packing: 175pcs/ctn, 0.0351cbm
(38x28x33cm), 14kg



T-110C(Box Guard Web)

Frequency: 8.2MHz/58KHz
Spec: Dual Alarm
Dimension: Ø70mmx38mm
Color: Black or Customized
Lock: Magnetic Lock
Packing: 100pcs/ctn, 0.047cbm
(60x42x18.5cm), 12kg



T-111(Self Alarming Tag)

Frequency: 8.2MHz/58KHz
Spec: Dual Alarm/Triple Alarm
Dimension: 80mmx35mm
Color: Black/Gray/White or Customized
Lock: Magnetic Lock
Packing: 100pcs/ctn, 0.029cbm
(44x31x21cm), 4.6kg



T-112(Self Alarming Tag)

Frequency: 8.2MHz/58KHz
Spec: Dual Alarm/Triple Alarm
Dimension: 92mmx39mm
Cable length: 175mm
Color: Black/Gray/White or Customized
Lock: Magnetic Lock
Packing: Customized



T-113(Self Alarming Tag)

Frequency: 8.2MHz/58KHz
Cable length: 170mm, 1500mm, customized
Spec: Dual Alarm/Triple Alarm
Dimension: 82mmx40mm
Lock: Standard/Super
Color: Black/Gray/White or Customized
Packing: Customized



T-114(Self Alarming Tag)

Frequency: 8.2MHz/58KHz
Spec: Dual Alarm/Triple Alarm
Cable length: 110mm
Dimension: 50mmx32mm
Color: Black or Customized
Lock: Magnetic Lock
Packing: Customized



T-114B(Self Alarming Tag)

Frequency: 8.2MHz/58KHz
Spec: Dual Alarm
Dimension: 50mmx32mm
Color: Black or Customized
Lock: Magnetic Lock
Packing: Customized



T-115(Self Alarming Tag)

Frequency: 8.2MHz/58KHz
Spec: Dual Alarm/Triple Alarm
Cable length: 110mm
Dimension: 60mmx30mm
Color: Black/Gray/White or Customized
Lock: Magnetic Lock
Packing: Customized



T-116(Self Alarming Tag)

Frequency: 8.2MHz/58KHz
 Spec: Dual Alarm/Triple Alarm
 Dimension: 53mmx30mm
 Color: Black/Gray/White or Customized
 Lock: Magnetic Lock
 Packing: 500pcs/ctn, 0.0353cbm
 (37.5x28.5x33cm), 11.5kg



T-117(Self Alarming Tag)

Frequency: 8.2MHz/58KHz
 Spec: Dual Alarm/Triple Alarm
 Dimension: 44mmx52mmx17mm
 Color: Black/Gray/White or Customized
 Lock: Magnetic Lock
 Packing: 500pcs/ctn, 0.029cbm
 (37.5x28.5x33cm), 11kg



T-118(Pull Box)

Frequency: 58KHz/8.2MHz
 Spec: Dual Alarm/Triple Alarm
 Dimension: 46mmx46mmx33mm
 Color: Black/Gray/White or customized
 Lock: Magnetic Lock
 Packing: Customized



T-119(Multi Self Alarming Tag)

Frequency: 8.2MHz/58KHz
 Spec: Dual Alarm/Triple Alarm
 Dimension: 48mmx40mmx23mm
 Color: Black/Gray/White or Customized
 Lock: Magnetic Lock
 Packing: 500pcs/ctn, 0.029cbm
 (37.5x28.5x33cm), 11kg



T-119B(Multi Self Alarming Tag)

Frequency: 58KHz
 Spec: Dual Alarm/Triple Alarm
 Dimension: 75mmx33mm
 Color: Black/Gray/White or customized
 Lock: Magnetic Lock
 Packing: 100pcs/ctn, 0.029cbm
 (44x31x21cm), 4.6kg



T-120(Retractable Box Guard)

Frequency: 8.2MHz/58KHz
 Spec: Dual Alarm/Triple Alarm
 Dimension: Ø73mm
 Color: Gray/White/Black or customized
 Lock: Magnetic Lock
 Packing: 50pcs/ctn, 0.017cbm
 (37x37x12.5cm), 5.4kg



T-120B(Mini Retractable Box Guard)

Frequency: 8.2MHz/58KHz
 Spec: Dual Alarm/Triple Alarm
 Dimension: Ø50mm
 Color: Gray/White/Black or customized
 Lock: Magnetic Lock
 Packing: 8pcs/box, 20boxes/ctn, 0.0438cbm
 (50x36.5x24cm), 14kg



T-001 (Mini Square)

Frequency: 8.2MHz
 Dimension: 48mmx42mm/44mmx38mm
 Color: Black/Gray/White or Customized
 Lock: Magnetic Lock
 Packing: 1,000pcs/ctn, 0.028cbm
 (45X31X20cm), 11kg



T-001B (New Mini Square)

Frequency: 8.2MHz
 Dimension: 52mmx43mm
 Color: Black/Gray/White or Customized
 Lock: Magnetic Lock
 Packing: 1,000pcs/ctn, 0.031cbm
 (59x40x13cm), 12kg



T-001E (Tiny Square)

Frequency: 8.2MHz
 Dimension: 41mmx35mm
 Color: Black/Gray/White or Customized
 Lock: Magnetic Lock
 Packing: 1,000pcs/ctn, 0.031cbm
 (59x40x13cm), 9kg



T-001F (Flat Square)

Frequency: 8.2MHz/58KHz
 Dimension: 51mmx25mm
 Color: Black/Gray/White or Customized
 Lock: Magnetic Lock
 Packing: 1,000pcs/ctn, 0.031cbm
 (59x40x13cm), 11kg



T-002 (Large Square)

Frequency: 8.2MHz
 Dimension: 70mmx58mm
 Color: Black/Gray/White or Customized
 Lock: Magnetic Lock
 Packing: 1000pcs/ctn, 0.058cbm
 (54x40x27cm), 15kg



T-003 (Mini Cone)

Frequency: 8.2MHz
 Dimension: Ø45mm
 Color: Black/Gray/White or Customized
 Lock: Magnetic Lock
 Packing: 1,000pcs/ctn, 0.031cbm
 (59x40x13cm), 10kg



T-005 (Large Cone)

Frequency: 8.2MHz
 Dimension: Ø63mm
 Color: Black/Gray/White or Customized
 Lock: Magnetic Lock
 Packing: 500pcs/ctn, 0.040cbm
 (59x40x17cm), 8kg



T-005B (New Large Cone)

Frequency: 8.2MHz
 Dimension: Ø63mm
 Color: Black/Gray/White or Customized
 Lock: Magnetic Lock
 Packing: 500pcs/ctn, 0.035cbm
 (59x40x15cm), 8kg



T-006 (Bell 30)

Frequency: 8.2MHz
 Dimension: Ø30mm
 Color: Black/Gray/White or Customized
 Lock: Magnetic Lock
 Packing: 1,000pcs/ctn, 0.020cbm
 (40x30x17cm), 9kg



T-006B(Bell 34 with hole)

Frequency: 8.2MHz
 Dimension: Ø34mm
 Color: Black/Gray/White or Customized
 Lock: Magnetic Lock
 Packing: 1,000pcs/ctn, 0.020cbm
 (40x30x17cm), 9kg



T-006C(Tiny 30)

Frequency: 8.2MHz
 Dimension: Ø34mm
 Color: Black/Gray/White or Customized
 Lock: Magnetic Lock
 Packing: 1,000pcs/ctn, 0.030cbm
 (58.5x39x13cm), 8kg



T-008(R50)

Frequency: 8.2MHz//58KHz
 Dimension: Ø50mm
 Color: Black/Gray/White or Customized
 Lock: Magnetic Lock
 Packing: 1,000pcs/ctn, 0.040cbm
 (59x40x17cm), 11kg



T-008B(R50 Light)

Frequency: 8.2MHz
 Dimension: Ø50mm
 Color: Black/Gray/White or Customized
 Lock: Magnetic Lock
 Packing: 1,000pcs/ctn, 0.040cbm
 (59x40x17cm), 11kg



T-008F(Super R50)

Frequency: 8.2MHz
 Dimension: Ø50mm
 Color: Black/Gray/White or Customized
 Lock: Magnetic Lock
 Packing: 1,000pcs/ctn, 0.031cbm
 (40x32x25cm), 13kg



T-009(R60)

Frequency: 8.2MHz
 Dimension: Ø60mm
 Color: Black/Gray/White or Customized
 Lock: Magnetic Lock
 Packing: 500pcs/ctn, 0.041cbm
 (59x39x18cm), 10kg



T-010(Alpha)

Frequency: 8.2MHz
 Dimension: Ø65mm
 Color: Black/Gray/White or Customized
 Lock: Magnetic Lock
 Packing: 500pcs/ctn, 0.041cbm
 (59x39x18cm), 9kg



T-010B(Midi Alpha)

Frequency: 8.2MHz
 Dimension: Ø50mm
 Color: Black/Gray/White or Customized
 Lock: Magnetic Lock
 Packing: 500pcs/ctn, 0.031cbm
 (59x40x13cm), 8kg



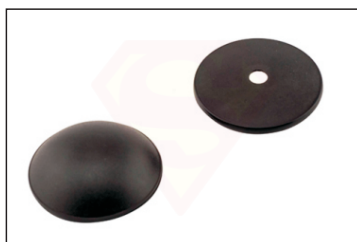
T-010C(Mini Alpha)

Frequency: 8.2MHz
 Dimension: Ø40mm
 Color: Black/Gray/White or Customized
 Lock: Magnetic Lock
 Packing: 1,000pcs/ctn, 0.040cbm
 (59x40x17cm), 13kg



T-011(Mini Golf)

Frequency: 8.2MHz/58KHz
Dimension: Ø45mm
Color: Black/Gray/White or Customized
Lock: Magnetic Lock
Packing: 1,000pcs/ctn, 0.040cbm
(59x40x17cm), 12kg



T-012F(Flat Midi Golf)

Frequency: 8.2MHz/58KHz
Dimension: Ø53mm
Color: Black/Gray/White or Customized
Lock: Magnetic Lock
Packing: 500pcs/ctn, 0.027cbm
(59x40x12cm), 8kg



T-012G(Groove Midi Golf)

Frequency: 8.2MHz/58KHz
Dimension: Ø53mm
Color: Black/Gray/White or Customized
Lock: Magnetic Lock
Packing: 500pcs/ctn, 0.027cbm
(59x40x12cm), 8kg



T-012S(Smooth Midi Golf)

Frequency: 58KHz/8.2MHz
Dimension: Ø53mm
Color: Black/Gray/White or Customized
Lock: Magnetic Lock
Packing: 500pcs/ctn, 0.027cbm
(59x40x12cm), 8kg



T-013G(Groove Large Golf)

Frequency: 58KHz/8.2MHz
Dimension: Ø64mm
Color: Black/Gray/White or Customized
Lock: Magnetic Lock
Packing: 500pcs/ctn, 0.035cbm
(59x40x15cm), 11kg



T-013H(Hexagon Large Golf)

Frequency: 8.2MHz/58KHz
Dimension: Ø64mm
Color: Black/Gray/White or Customized
Lock: Magnetic Lock
Packing: 500pcs/ctn, 0.035cbm
(59x40x15cm), 11kg



T-013S(Smooth Large Golf)

Frequency: 8.2MHz/58KHz
Dimension: Ø64mm
Color: Black/Gray/White or Customized
Lock: Magnetic Lock
Packing: 500pcs/ctn, 0.035cbm
(59x40x15cm), 11kg



T-014(Mini UFO)

Frequency: 8.2MHz
Dimension: Ø48mm
Color: Black/Gray/White or Customized
Lock: Magnetic Lock
Packing: 1,000pcs/ctn, 0.031cbm
(59x40x13cm), 11kg



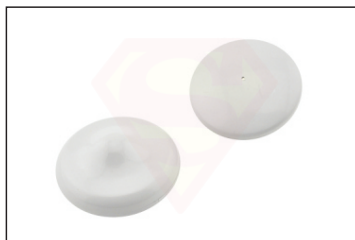
T-016(Tao 40)

Frequency: 8.2MHz
Dimension: Ø40mm
Color: Black/Gray/White or Customized
Lock: Magnetic Lock
Packing: 1,000pcs/ctn, 0.031cbm
(59x40x13cm), 11kg



T-016B(Tiny 40)

Frequency: 8.2MHZ
Dimension: Ø38mm
Color: Black/Gray/White or Customized
Lock: Magnetic Lock
Packing: 1,000pcs/ctn, 0.031cbm
(59x40x13cm), 11kg



T-017(Tao 50)

Frequency: 8.2MHz/58KHz
Dimension: Ø50mm
Color: Black/Gray/White or Customized
Lock: Magnetic Lock
Packing: 1000pcs/ctn, 0.053cbm
(58x40x23cm), 12.6kg



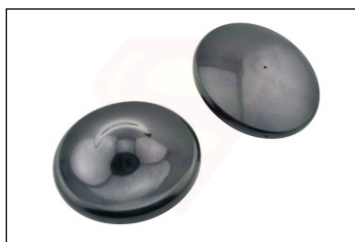
T-017B(New Tao 50)

Frequency: 8.2MHz/58KHz
Dimension: Ø50mm
Color: Black/Gray/White or Customized
Lock: Magnetic Lock
Packing: 500pcs/ctn, 0.026cbm
(59x40x11cm), 9kg



T-017C(X50)

Frequency: 8.2MHz
Dimension: Ø50mm
Color: Black/Gray/White or Customized
Lock: Magnetic Lock
Packing: 500pcs/ctn, 0.031cbm
(59x40x13cm), 9kg



T-017D(Tao 60)

Frequency: 8.2MHz/58KHz
Dimension: Ø60mm
Color: Black/Gray/White or Customized
Lock: Magnetic Lock
Packing: 500pcs/ctn, 0.040cbm
(59x40x17cm), 10kg



T-018(Super Round)

Frequency: 8.2MHz
Dimension: Ø48mm
Color: Black/Gray/White or Customized
Lock: Magnetic Lock
Packing: 1,000pcs/ctn, 0.035cbm
(59x40x15cm), 12kg



T-019(SST Tag)

Frequency: 8.2MHz
Dimension: 55mmx20mm
Color: Black/Gray/White or Customized
Lock: Magnetic Lock
Packing: 1,000pcs/ctn, 0.017cbm
(42x28x15cm), 8kg



T-022(Mini Round)

Frequency: 8.2MHz
Dimension: Ø42mm
Color: Black/Gray/White or Customized
Lock: Magnetic Lock
Packing: 1,000pcs/ctn, 0.031cbm
(43x40x13cm), 10kg



T-024 (Mini Bomba)

Frequency: 58KHz/8.2MHz
Dimension: Ø42mm
Color: Black/Gray/White or Customized
Lock: Magnetic Lock
Packing: 1,000pcs/ctn, 0.033cbm
(59x40x14cm), 12kg



T-025 (Bomba)

Frequency: 58KHz/8.2MHz
 Dimension: Ø55mm
 Color: Black/Gray/White or Customized
 Lock: Magnetic Lock
 Packing: 500pcs/ctn, 0.031cbm
 (59x40x13cm), 9kg



T-031 (Mini Pencil)

Frequency: 58KHz/8.2MHz
 Dimension: 46mmx13mm
 Color: Black/Gray/White or Customized
 Lock: Magnetic Lock
 Packing: 1,000pcs/ctn, 0.016cbm
 (40x30x13cm), 7.5kgs



T-031C (Micro Pencil)

Frequency: 58KHz/8.2MHz
 Dimension: 42mmx15mm
 Color: Black/Gray/White or Customized
 Lock: Magnetic Lock
 Packing: 1,000pcs/ctn, 0.017cbm
 (40x30x14cm), 10kg



T-032 (Midi Pencil)

Frequency: 58KHz/8.2MHz
 Dimension: 55mmx13mm/51mmx13mm
 Color: Black/Gray/White or Customized
 Lock: Magnetic Lock
 Packing: 1,000pcs/ctn, 0.018cbm
 (40x30x15cm), 10kg



T-032B (Round Midi Pencil)

Frequency: 58KHz/8.2MHz
 Dimension: 51mmx13mm
 Color: Black/Gray/White or Customized
 Lock: Magnetic Lock
 Packing: 1,000pcs/ctn, 0.018cbm
 (40x30x15cm), 10kg



T-032C (Super Pencil)

Frequency: 58KHz/8.2MHz
 Dimension: 61mmx20mm
 Color: Black/Gray/White or Customized
 Lock: Magnetic Lock
 Packing: 1,000pcs/ctn, 0.023cbm
 (40x30x19cm), 12kg



T-032D (Flat Midi Pencil)

Frequency: 58KHz/8.2MHz
 Dimension: 51mmx13mm
 Color: Black/Gray/White or Customized
 Lock: Magnetic Lock
 Packing: 1,000pcs/ctn, 0.018cbm
 (40x30x15cm), 11kg



T-032E (Universal Pencil)

Frequency: 58KHz/8.2MHz
 Dimension: 64mmx15mm/72mmx15mm
 Color: Black/Gray/White or Customized
 Lock: Magnetic Lock
 Packing: 1,000pcs/ctn, 0.025cbm
 (40x30x21cm), 12kg



T-033 (Large Pencil)

Frequency: 58KHz/8.2MHz
 Dimension: 68mmx23mm
 Color: Black/Gray/White or Customized
 Lock: Magnetic Lock
 Packing: 1,000pcs/ctn, 0.026cbm
 (59x40x11cm), 13kg



T-033B(New Large Pencil)

Frequency:58KHz/8.2MHz
 Dimension: 62mmx25mm
 Color: Black/Gray/White or Customized
 Lock: Magnetic Lock
 Packing: 1,000pcs/ctn, 0.031cbm
 (59x40x13cm), 13kg



T-034(Bestag)

Frequency:58KHz/8.2MHz
 Dimension: 50mmx25mm
 Color: Black/Gray/White or Customized
 Lock: Magnetic Lock
 Packing: 1,000pcs/ctn, 0.030cbm
 (59x39x13cm), 11kg



T-034B (New Bestag)

Frequency:58KHz/8.2MHz
 Dimension: 68mmx25mm
 Color: Black/Gray/White or Customized
 Lock: Magnetic Lock
 Packing: 1,000pcs/ctn, 0.033cbm
 (59x40x14cm), 13kg



T-035(Pencil with Lanyard)

Frequency:58KHz/8.2MHz
 Dimension: 55mmx12mm/50mmx12mm
 Color: Black/Gray/White or Customized
 Lock: Magnetic Lock
 Packing: 1,000pcs/ctn, 0.020cbm
 (40x30x17cm), 8.5kg



T-035B(Mini Detachable Pencil)

Frequency: 8.2MHz/58KHz
 Dimension: 46mmx14mm
 Color: Black/Gray/White or Customized
 Lock: Magnetic Lock
 Packing: 1,000pcs/ctn, 0.023cbm
 (40x30x19cm), 10.5kg



T-035D(SST with Ly)

Frequency:8.2MHz
 Dimension: 59mmx26mm/55mmx23mm
 Color: Black/Gray/White or Customized
 Lock: Magnetic Lock
 Packing: 1,000pcs/ctn, 0.031cbm
 (59x40x13cm), 9kg



T-036(SPL Tag II)

Frequency:58KHz
 Dimension: 84mmx30mm
 Color: Black/Gray/White or Customized
 Lock: Steel Plate Lock
 Packing: 1,000pcs/ctn, 0.040cbm
 (59x40x17cm), 13kg



T-036B(SPL Tag)

Frequency:58KHz
 Dimension: 88mmx30mm
 Color: Black/Gray/White or Customized
 Lock: Steel Plate Lock
 Packing: 1,000pcs/ctn, 0.047cbm
 (59x40x20cm), 14kg



T-036C(Mini SPL Tag)

Frequency:58KHz
 Dimension: 54mmx32mm
 Color: Black/Gray/White or Customized
 Lock: Steel Plate Lock
 Packing: 1,000pcs/ctn, 0.033cbm
 (59x40x14cm), 12kg



T-036D(SPL Tag III)

Frequency:58KHz
Dimension: 69mmx30mm
Color: Black/Gray/White or Customized
Lock: Steel Plate Lock
Packing: 1,000pcs/ctn, 0.040cbm
(59x40x17cm), 10kg



T-037(Large Gator)

Frequency:58KHz
Dimension: 96mmx28mm
Color: Black/Gray/White or Customized
Lock: Steel Plate Lock
Packing: 1,000pcs/ctn, 0.040cbm
(59x40x17cm), 12kg



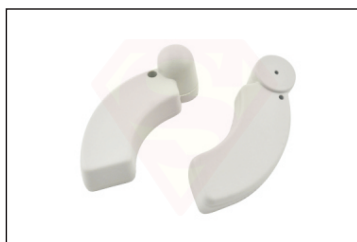
T-037B(Micro Gator)

Frequency:58KHz
Dimension:75mmx28mm/82mmx28mm
Color: Black/Gray/White or Customized
Lock: Steel Plate Lock
Packing: 1,000pcs/ctn, 0.031cbm
(59x40x13cm), 11kg



T-037C(Clutch Tag)

Frequency:58KHz/8.2MHz
Dimension: 60mmx20mm
Color: Gray/White or Customized
Lock: Magnetic Lock
Packing: 1,000pcs/ctn, 0.031cbm
(59x40x13cm), 13kg



T-037D(Half Moon)

Frequency: 58KHz
Dimension: 60mmx17mm
Color: Black/Gray/White or Customized
Lock: Magnetic Lock
Packing: 1,000pcs/ctn, 0.024cbm
(49x33x15cm), 11kg



T-038(Apparel Tag)

Frequency: 58KHz/8.2MHz
Dimension:60mmx20mm
Color: Black/Gray/White or Customized
Lock: Magnetic Lock
Packing: 1,000pcs/ctn, 0.031cbm
(59x40x13cm), 9kg



T-038B(Fish Tag)

Frequency: 58KHz/8.2MHz
Dimension:59mmx18mm
Color: Black/Gray/White or Customized
Lock: Magnetic Lock
Packing: 1,000pcs/ctn, 0.031cbm
(59x40x13cm), 9kg



T-038C(Fish Tag with Ly)

Frequency: 58KHz/8.2MHz
Dimension:59mmx18mm
Color: Black/Gray/White or Customized
Lock: Magnetic Lock
Packing: 1,000pcs/ctn, 0.031cbm
(59x40x13cm), 9kg



T-038D(Apparel Tag)

Frequency: 58KHz/8.2MHz
Dimension:63mmx17mm
Color: Black/Gray/White or Customized
Lock: Magnetic Lock
Packing: 1,000pcs/ctn, 0.024cbm
(43x30x19cm), 11kg



T-039(Xpencil)

Frequency:58KHz/8.2MHz
Dimension: 31mmx32mm
Color: Black/Gray/White or Customized
Lock: Magnetic Lock
Packing: 1,000pcs/ctn, 0.018cbm
(40x30x15cm), 10kg



T-039B(Xpencil with Ly)

Frequency:58KHz/8.2MHz
Dimension: 31mmx32mm
Color: Black/Gray/White or Customized
Lock: Magnetic Lock
Packing: 1,000pcs/ctn, 0.019cbm
(38x29x18cm), 10kg



T-040(VSPL TAG)

Frequency:58KHz
Dimension: 58mmx30mm
Color: Black/Gray/White or Customized
Lock: Steel Plate Lock
Packing: 1,000pcs/ctn, 0.031cbm
(59x40x13cm), 9kg



T-040B(New VSPL TAG)

Frequency:58KHz
Dimension: 60mmx31mm
Color: Black/Gray/White or Customized
Lock: Steel Plate Lock
Packing: 1,000pcs/ctn, 0.031cbm
(59x40x13cm), 9kg



T-041(Dual SPL Tag)

Frequency:58KHz/8.2MHz
Dimension: 62mmx30mm
Color: Black/Gray/White or Customized
Lock: Steel Plate Lock/Magnetic Lock
Packing: 1,000pcs/ctn, 0.037cbm
(45x33x25cm), 14kg



T-042(Clothes Tag)

Frequency:58KHz
Dimension:67mmx22mm
Color: Black/Gray/White or Customized
Lock: Magnetic Lock
Packing: 1,000pcs/ctn, 0.028cbm
(32x32x27cm), 8kg



T-043(Clothes Tag)

Frequency:58KHz
Dimension:60mmx25mm
Color: Black/Gray/White or Customized
Lock: Magnetic Lock
Packing: 1,000pcs/ctn, 0.028cbm
(32x32x27cm), 8kg



T-043B(Clothes Tag)

Frequency:58KHz
Dimension:60mmx25mm
Color: Black/Gray/White or Customized
Lock: Magnetic Lock
Packing: 1,000pcs/ctn, 0.031cbm
(32x32x27cm), 13kg



T-044(Hidden Pin Tag)

Frequency:58KHz/8.2MHz
Dimension:65mmx38mm
Color: Black/Gray/White or Customized
Lock: Magnetic Lock
Packing: 1,000pcs/ctn, 0.023cbm
(40x30x19cm), 21kg



T-045(Clip Tag)

Frequency: 58KHz/8.2MHz
 Dimension: 72mmx37mm
 Color: Black/Red/White or Customized
 Lock: Magnetic Lock
 Packing: Customized



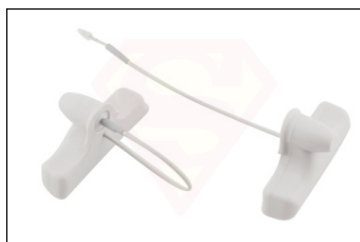
T-046(Golf Club Tag)

Frequency: 58KHz/8.2MHz
 Dimension: 57mmx34mmx29mm
 Color: Black or customized
 Lock: Magnetic Lock
 Packing: 500pcs/ctn, 0.032cbm
 (59x40x13cm), 12.5kg



T-047(Triangle Profile)

Frequency: 8.2MHz/58KHz
 Dimension: 58mmx30mm
 Color: Black/Gray/White or Customized
 Lock: Magnetic Lock
 Packing: 1,000pcs/ctn, 0.031cbm
 (59x40x13cm), 13kg



T-047B(Triangle Profile with Ly)

Frequency: 8.2MHz/58KHz
 Dimension: 58mmx30mm
 Color: Black/Gray/White or Customized
 Lock: Magnetic Lock
 Packing: 1,000pcs/ctn, 0.031cbm
 (59x40x13cm), 14.5kg



T-048(Peg Tag)

Frequency: 8.2MHz/58KHz
 Dimension: 42mmx47mmx32mm
 Color: Yellow
 Lock: Magnetic Lock
 Packing: 500pcs/ctn, 0.036cbm
 (40x30x30cm), 9kg



T-049(RFID TAG)

Frequency: RFID+8.2MHz/RFID+58KHz
 Dimension: 30mmx64.5mmx18.7mm
 Color: Black/Gray/White or Customized
 Lock: Magnetic Lock
 Packing: 1,000pcs/ctn, 0.043cbm
 (58.5x39x19cm), 15.1kg



T-050(RFID TAG)

Frequency: RFID+8.2MHz/RFID+58KHz
 Dimension: 69mmx30.5mmx20.5mm
 Color: Black/Gray/White or Customized
 Lock: Steel Plate Lock
 Packing: 1,000pcs/ctn, 0.040cbm
 (58.5x39x17.5cm), 13.9kg



T-051(Slim Tag)

Frequency: 58KHz
 Dimension: 42mmx9mm
 Color: Black/Gray/White or Customized
 Packing: 5,000pcs/ctn, 0.033cbm
 (54x40x15cm), 13kg



B-001(Iron Mini Bottle)

Frequency: 58KHz/8.2MHz
 Dimension: Ø36mm
 Color: Black/Gray/White or Customized
 Lock: Magnetic Lock
 Packing: 500pcs/ctn, 0.029cbm
 (40x30x24cm), 10kg



B-001B(Plastic Mini Bottle)

Frequency: 58KHz/8.2MHz
 Dimension: Ø36mm
 Color: Black/Gray/White or Customized
 Lock: Magnetic Lock
 Packing: 250pcs/ctn, 0.025cbm
 (53x39x12cm), 5.5kg



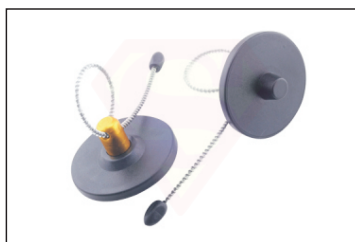
B-001C(Ultra Strip Bottle)

Frequency: 58KHz
 Dimension: 45mmx36mm
 Color: Black/Gray/White or Customized
 Lock: Magnetic Lock
 Packing: 500pcs/ctn, 0.029cbm
 (40x30x24cm), 9kg



B-001D(Plastic Bottle)

Frequency: 8.2MHz/58KHz
 Color: Black/Gray/White or Customized
 Lock: Magnetic Lock
 Packing: Customized



B-002(Iron Round Bottle)

Frequency: 8.2MHz
 Dimension: Ø56mm
 Color: Black/Gray/White or Customized
 Lock: Magnetic Lock
 Packing: 500pcs/ctn, 0.046cbm
 (50x35x26cm), 10kg



B-002B(Plastic Round Bottle)

Frequency: 8.2MHz
 Dimension: Ø56mm
 Color: Black/Gray/White or Customized
 Lock: Magnetic Lock
 Packing: 500pcs/ctn, 0.046cbm
 (50x35x26cm), 10kg



B-004(Iron Tao Bottle)

Frequency: 8.2MHz/58KHz
 Dimension: Ø50mm
 Color: Black/Gray/White or Customized
 Lock: Magnetic Lock
 Packing: 500pcs/ctn, 0.046cbm
 (50x35x26cm), 11kg



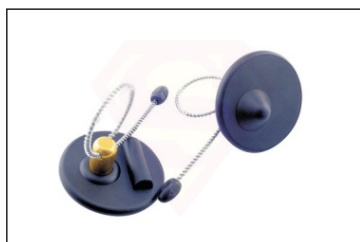
B-005(Plastic Tao Bottle)

Frequency: 8.2MHz/58KHz
 Dimension: Ø50mm
 Color: Black/Gray/White or Customized
 Lock: Magnetic Lock
 Packing: 500pcs/ctn, 0.046cbm
 (50x35x26cm), 11kg



B-006(Mini Square Bottle)

Frequency: 8.2MHz
 Dimension: 48mmx42mm
 Color: Black/Gray/White or Customized
 Lock: Magnetic Lock
 Packing: 500pcs/ctn, 0.035cbm
 (55x40x16cm), 10.5kg



B-007 (Iron R50 Bottle)

Frequency: 8.2MHz/58KHz
Dimension: Ø50mm
Color: Black/Gray/White or Customized
Lock: Magnetic Lock
Packing: 500pcs/ctn, 0.046cbm
(50x35x26cm), 11kg



B-007B (Plastic R50 Bottle)

Frequency: 8.2MHz/58KHz
Dimension: Ø50mm
Color: Black/Gray/White or Customized
Lock: Magnetic Lock
Packing: 500pcs/ctn, 0.046cbm
(50x35x26cm), 11kg



B-010 (Can Clip)

Frequency: 8.2MHz/58KHz
Dimension: 68mmx41mm
Color: Black/Gray or Customized
Lock: Magnetic Lock
Packing: 500pcs/ctn, 0.028cbm
(45x24x26cm), 11.5kg



B-011 (Small Top Bottle)

Frequency: 8.2MHz/58KHz
Dimension: Ø37mmx46mm
Color: Black or Customized
Lock: Magnetic Lock
Packing: 300pcs/ctn, 0.048cbm
(42x35x33cm), 12kg



B-012 (Big Top Bottle)

Frequency: 8.2MHz/58KHz
Dimension: Ø43mmx80mm
Color: Black or Customized
Lock: Magnetic Lock
Packing: 200pcs/ctn, 0.070cbm
(50x37x38cm), 12.5kg



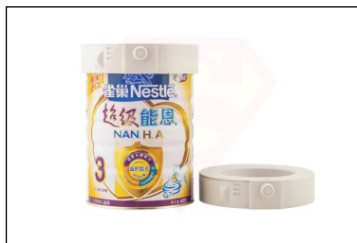
B-013 (Big Vega Tag I)

Frequency: 8.2MHz/58KHz
Dimension: Ø140mmx33mm
(Between 127mm to 129mm)
Color: Grey or Customized
Lock: Magnetic Lock
Packing: 100pcs/ctn, 0.068cbm
(70x34x28.5cm), 13.5kg



B-013B (Small Vega Tag I)

Frequency: 8.2MHz/58KHz
Dimension: Ø113mmx33mm
(Between 99mm to 100mm)
Color: White or Customized
Lock: Magnetic Lock
Packing: 100pcs/ctn, 0.050cbm
(58x35x24.5cm), 10kg



B-013C (Big Vega Tag II)

Frequency: 8.2MHz/58KHz
Dimension: Ø140mmx33mm
(Between 127mm to 129mm)
Color: White or Customized
Lock: Magnetic Lock
Packing: 100pcs/ctn, 0.068cbm
(70x34x28.5cm), 13.5kg



B-013D (Small Vega Tag II)

Frequency: 8.2MHz/58KHz
Dimension: Ø113mmx33mm
(Between 99mm to 100mm)
Color: White or Customized
Lock: Magnetic Lock
Packing: 100pcs/ctn, 0.050cbm
(58x35x24.5cm), 10kg



B-013E(Small Vega Tag III)

Frequency: 8.2MHz/58KHz
Dimension: Ø100±1mm(146*109*56mm)
Color: Pink or Customized
Lock: Magnetic Lock
Packing: 100pcs/ctn, 0.031cbm
(59x40x23cm), 9.5kg



B-014(Fireproof Bottle)

Frequency: 58KHz/8.2MHz
Dimension: Ø52mm
Color: White or Customized
Lock: Magnetic Lock
Packing: 250pcs/ctn, 0.024cbm
(40x30x20cm), 8kg



B-015(Handcuff Bottle Tag)

Frequency: 58KHz/8.2MHz
Dimension: Ø50mm
Color: Black/Gray/White or Customized
Lock: Magnetic Lock
Packing: 500pcs/ctn, 0.035cbm
(40x32x27cm), 13kg



B-015B(Multi-Purpose)

Frequency: 58KHz/8.2MHz
Dimension: Ø55mm
Color: Black/Gray/White or Customized
Lock: Magnetic Lock
Packing: 500pcs/ctn, 0.035cbm
(40x32x27cm), 17kg



B-015C(Handcuff Bottle Tag)

Frequency: 58KHz/8.2MHz
Dimension: Ø32mm
Color: Black/Gray/White or Customized
Lock: Magnetic Lock
Packing: 1000pcs/ctn, 0.038cbm
(59x40x16cm), 13.5kg



B-015D(Bottle Tag with Cap)

Frequency: 58KHz/8.2MHz
Dimension: 58x51x35mm
The diameter of bottle neck: Ø25mm~33mm
Color: Black/Gray/White or Customized
Lock: Magnetic Lock
Packing: 500pcs/ctn, 0.045cbm
(59x40x19cm), 9kg



B-017(Bottle Cap)

Frequency: 8.2MHz/58KHz
Dimension: 66mmx50mmx43mm
The diameter of bottle neck: Ø28~32mm
Color: Black or Customized
Lock: Magnetic Lock
Packing: 200pcs/ctn, 0.044cbm
(62.5x29x24cm), 16kg



B-019(Full Closure Bottle Tag)

Frequency: 8.2MHz/58KHz
Dimension: 103mmx73mmx42mm
The diameter of bottle neck: Ø27~33mm
Lock: 11000 GS Super Lock
Packing: 100pcs/ctn, 0.038cbm
(59x40x16cm), 6.8kg



B-021(Vacuum Cup Tag)

Frequency: 8.2MHz/58KHz
Dimension: 38x33x39mm
Length: 270mm
Color: Grey or Customized
Lock: Magnetic Lock
Packing: 200pcs/ctn, 0.038cbm
(42x30x30cm), 8.7kg



I-001(Oval Ink Pin)

Dimension: 42mmx28mm
Color: White/Yellow/Transparent or Customized
Packing: 1,000pcs/ctn, 0.030cbm
(59x40x13cm), 6kg



I-001B(Curved Ink Pin)

Dimension: 42mmx28mm
Color: White/Yellow/Transparent or Customized
Packing: 1,000pcs/ctn, 0.030cbm
(59x40x13cm), 9kg



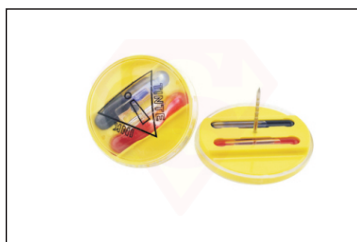
I-001C(Square Ink Pin)

Dimension: 45mmx28mm
Color: White/Yellow/Transparent or Customized
Packing: 1,000pcs/ctn, 0.020cbm
(40x30x17cm), 8kg



I-001E(Hexagonal Ink Pin)

Dimension: 41mmx26mm
Color: Beige/Gray/ or Customized
Packing: 1,000pcs/ctn, 0.023cbm
(41x25x22cm), 7.5Kg



I-002(Round Ink Pin)

Dimension: Ø35mm
Color: Yellow/Blue/Transparent or Customized
Packing: 1,000pcs/ctn, 0.030cbm
(59x39x13cm), 8kg



I-002B(Oblong Ink Pin)

Dimension: 55mmx25mm
Color: Black/Gray/White or Customized
Packing: 1,000pcs/ctn, 0.031cbm
(43x29x25cm), 7Kg



I-003(Global Ink Pin)

Dimension: Ø46.5mm
Color: Green/Red or Customized
Packing: 1,000pcs/ctn, 0.028cbm, 8Kg



I-004(Tao60 Ink Tag)

Frequency: 58KHz/8.2MHz
Dimension: Ø60mm
Color: Black/Gray/White or Customized
Lock: Magnetic Lock
Packing: 500pcs/ctn, 0.045cbm
(61x61x12cm), 10kg



I-004B(Tao50 Ink Tag)

Frequency: 58KHz/8.2MHz
Dimension: Ø50mm
Color: Black/Gray/White or Customized
Lock: Magnetic Lock
Packing: 500pcs/ctn, 0.041cbm
(45x35x26cm), 8.6kg



I-005(Golf Ink Tag)

Frequency: 58KHz/8.2MHz
 Dimension: Ø55mm
 Color: Black/Gray/White or Customized
 Lock: Magnetic Lock
 Packing: 500pcs/ctn, 0.027cbm
 (59x40x11.5cm), 11kg



I-005B(Clear Golf Ink Tag)

Frequency: 58KHz/8.2MHz
 Dimension: Ø55mm
 Color: Transparent or Customized
 Lock: Magnetic Lock
 Packing: 500pcs/ctn, 0.027cbm
 (59x40x11.5cm), 11kg



I-005C(Mini White Golf Ink Tag)

Frequency: 58KHz/8.2MHz
 Dimension: Ø50mm
 Color: White or Customized
 Lock: Magnetic Lock
 Packing: 500pcs/ctn, 0.044cbm
 (45x35x28cm), 9.2kg



I-006(R50 Ink Tag)

Frequency: 8.2MHz
 Dimension: Ø50mm
 Color: Black/Gray/White or Customized
 Lock: Magnetic Lock
 Packing: 500pcs/ctn, 0.028cbm
 (38x29x25cm), 8kg



I-006B(New R50 Ink Tag)

Frequency: 8.2MHz/58KHz
 Dimension: Ø50mm
 Color: Black/Gray/White or Customized
 Lock: Magnetic Lock
 Packing: 1,000pcs/ctn, 0.051cbm
 (41x28x45cm), 15kg



I-006C(New R50 Ink Tag)

Frequency: 8.2MHz/58KHz
 Dimension: Ø50mm
 Color: Black/Gray/White or Customized
 Lock: Magnetic Lock
 Packing: Customized



I-007(Mini Round Ink Pin)

Dimension: Ø25mm
 Color: Red/Blue/Yellow/Green or Customized
 Packing: 2,000pcs/ctn, 0.020cbm
 (40x30x17cm), 7kg



I-008(Just Ink Tag)

Frequency: 58KHz
 Dimension: Ø40mm
 Color: Red/Blue/Yellow/Green or Customized
 Lock: Magnetic Lock
 Packing: 1,000pcs/ctn, 0.036cbm
 (46X30X26cm), 11kg



I-009(Clutch Ink Pin)

Dimension: Ø40mm
 Color: Red/Blue/Yellow/Green or Customized
 Packing: 1,000pcs/ctn, 0.025cbm
 (39X27X24cm), 7kg



I-011(Flat Golf Ink Tag)

Frequency: 58KHz/8.2MHz
Dimension: Ø45mm
Color: Black/Gray/White or Customized
Lock: Magnetic Lock
Packing: 1,000pcs/ctn, 0.051cbm
(41x28x45cm), 15kg



I-014(Mini Bomba Ink Tag)

Frequency: 8.2MHz
Dimension: Ø42mm
Color: Black/Gray/White or Customized
Lock: Magnetic Lock
Packing: 1,000pcs/ctn, 0.033cbm
(59x40x14cm), 14kg



I-014B(Mini Bomba Ink Tag)

Frequency: 8.2MHz
Dimension: Ø40mm
Color: White or Customized
Lock: Magnetic Lock
Packing: Customized



I-015(Universal Ink Tag)

Frequency: 58KHz
Dimension: Ø51mm
Color: Black/Gray/White or Customized
Lock: Magnetic Lock
Packing: 500pcs/ctn, 0.031cbm
(59x40x13cm), 10kg



I-015B(New R50 Ink Tag)

Frequency: 58KHz
Dimension: Ø50mm
Color: Black/Gray/White or Customized
Lock: Magnetic Lock
Packing: 500pcs/ctn, 0.033cbm
(45x35x24cm), 7.5kg



I-017(Bi Color Ink Pin)

Dimension: Ø35mm
Color: Red/Blue/Yellow/Green or Customized
Packing: 1,500pcs/ctn, 0.033cbm
(59.5x38.5x14.5cm), 11.5kg



I-020(R35 Ink Tag)

Frequency: 8.2MHz
Dimension: Ø35mm
Color: Black/Gray/White or Customized
Lock: Magnetic Lock
Packing: Customized



I-021(Mini Square Ink Tag)

Frequency: 8.2MHz/58K
Dimension: 47mmx41mm
Color: Black or Customized
Lock: Magnetic Lock
Packing: Customized



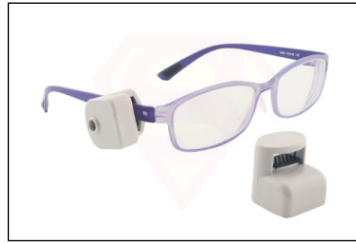
I-022(Oblong Ink Pin)

Dimension: Ø36X24mm
Color: White or Customized
Packing: 1,000pcs/ctn, 0.029cbm
(40X31X23.5cm), 4.2kg



T-101(Blister Tag)

Frequency: 58KHz/8.2MHz
 Dimension: 55mmx55mm
 Color: Gray/White or Customized
 Lock: Magnetic Lock
 Packing: 500pcs/ctn, 0.041cbm
 (59x39x18cm), 10.5kg



T-102(Optical Tag)

Frequency: 58KHz/8.2MHz
 Dimension: 25mmx25mm
 Color: Gray/White or Customized
 Lock: Mechanic Lock
 Packing: 1,000pcs/ctn, 0.020cbm
 (40x30x17cm), 10kg



T-102B(Optical Tag)

Frequency: 58KHz
 Dimension: 36mmx28mm
 Color: Gray/White or Customized
 Lock: Mechanic Lock
 Packing: 1,000pcs/ctn, 0.020cbm
 (40x30x17cm), 10kg



T-103(Screw Releaser)

Dimension: 9cm in length
 Color: Gray/White or Customized
 Packing: 500pcs/ctn, 0.031cbm
 (59x40x13cm), 5kg



T-104(Optical Tag)

Frequency: 58KHz/8.2MHz
 Dimension: 41mmx23mm
 Color: Black or Customized
 Lock: Mechanic Lock
 Packing: 1,000pcs/ctn, 0.050cbm
 (59x40x21cm), 18kg



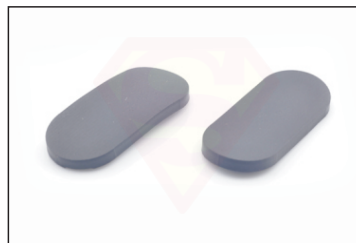
T-106(Hammer Optical Tag)

Frequency: 58KHz/8.2MHz
 Dimension: 52mmx31mm
 Color: Gray/White or Customized
 Lock: Magnetic Lock
 Packing: 1,000pcs/ctn, 0.026cbm
 (40x30x22cm), 13kg



T-106B(Hammer Optical Tag)

Frequency: 58KHz/8.2MHz
 Dimension: 30mmx46mm
 Color: Gray/White or Customized
 Lock: Magnetic Lock
 Packing: 1,000pcs/ctn, 0.031cbm
 (59x40x13cm), 13kg



T-107(Sauna Tag)

Frequency: 8.2MHz
 Dimension: 60mmx25mm
 Color: Gray/Black or Customized
 Packing: 2,000pcs/ctn, 0.020cbm
 (40x30x17cm), 14.5kg



T-108B(Jewelry Tag)

Frequency: 58KHz/8.2MHz
 Dimension: 28.5mmx11mmx13mm
 Color: White/Beige/Gray or Customized
 Packing: 5,000pcs/ctn, 0.023cbm
 (38x31x19.5cm), 21.1kg



A-009(AM Label in Sheets)

Frequency: 58KHz
Dimension: 45.21mmx10.67mm
Color: White/Barcode/Black
Packing: 20,000pcs/ctn, 0.032cbm
(39x30x28cm), 12.5kg



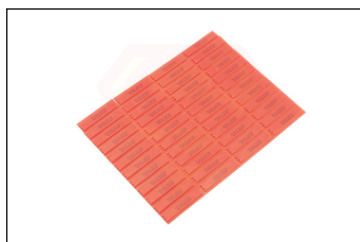
A-009B(AM Label in Rolls)

Frequency: 58KHz
Dimension: 45.21mmx10.67mm
Color: White/Barcode/Black
Packing: 30,000pcs/ctn, 0.083cbm
(57.5x57.5x25cm), 24kg



A-009C(AM Label for Curves)

Frequency: 58KHz
Dimension: 72mmx60mm
Color: White/Barcode/Black
Packing: 4,000pcs/ctn, 0.032cbm
(39X29.5X28cm), 7kg



A-009D(Microwave AM Label)

Frequency: 58KHz
Dimension: 44.60mmx11.00mmx2.00mm
Color: White/Barcode/Black
Packing: 20,000pcs/ctn, 0.043cbm
(38.5X30X37.5cm), 16.50kg
Description: Designed for frozen meat products and apply to meat packaging. Pls remove AM labels before microwaved. Work well on liquids, foils and in metal shopping carts.



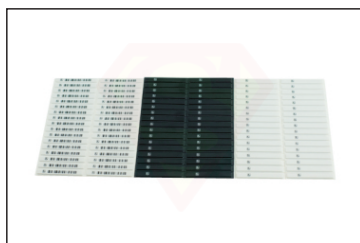
A-009E(SPL AM Label)

Frequency: 58KHz
Dimension: 44.60mmx12.26mmx1.80mm
Color: White/Barcode/Black
Packing: 17,600pcs/ctn, 0.035cbm
(39x29.5x30cm), 13.3kg



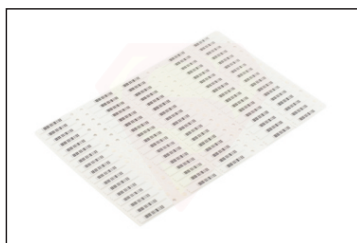
A-009F(Waterproof AM Label)

Frequency: 58KHz
Dimension: 49.50mmx14.70mmx2.00mm
Color: White/Barcode/Black
Packing: 10,000pcs/ctn, 0.001cbm
(42.5x14.7x2cm), 9.5kg



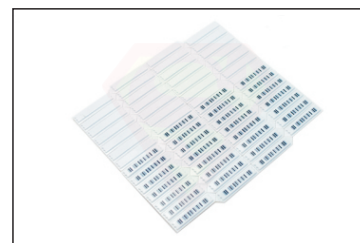
A-010(Sheet Narrow Label)

Frequency: 58KHz
Dimension: 43.5mmx7.1mmx1.3mm
Color: White/Barcode/Black
Packing: 20,000pcs/ctn, 0.021cbm
(43x30x16cm), 8.9kg



A-016(Round Hang Tag)

Frequency: 58KHz
Dimension: 59mmx12mm
Color: White/Barcode/Black
Packing: 10,000pcs/ctn, 0.027cbm
(46x19x31cm), 18kg



A-016B(Insert Label)

Frequency: 58KHz
Dimension: 48.8mmx11mmx1.8mm
Color: White/Barcode/Black
Packing: 20,000pcs/ctn, 0.032cbm
(39x30x28cm), 14.8kg



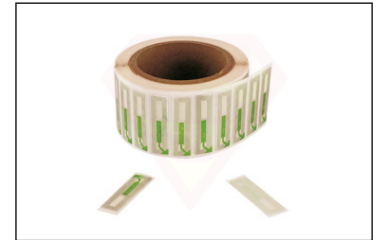
RF-101(Deactivate Paper)

Frequency: N/A
 Dimension: Customized
 Color: Barcode/White/Black or Customized
 Packing: 40,000pcs/ctn, 0.021cbm
 (30x30x24cm), 14kg



RF-102(Jewelry/Glasses Label)

Frequency: 8.2MHz
 Spec: Deactivatable/Non-Deactivatable
 Dimension: 30mmx30mm or Customized
 Color: Barcode/White/Black/Transparent/Thermal
 Packing: 20,000pcs/ctn, 0.019cbm
 (29x29x24cm), 10kg



RF-1552(Lipstick Label)

Frequency: 8.2MHz
 Spec: Deactivatable
 Dimension: 15mmx52mm
 Color: White/Transparent
 Packing: 20,000pcs/ctn, 0.013cbm
 (34.5x34.5x11.5cm), 6kg



RF-1965(Lipstick Label)

Frequency: 8.2MHz
 Spec: Deactivatable/Non-Deactivatable
 Dimension: 19mmx65mm
 Color: Transparent
 Packing: 20,000pcs/ctn, 0.014cbm
 (31x31x15cm), 8kg



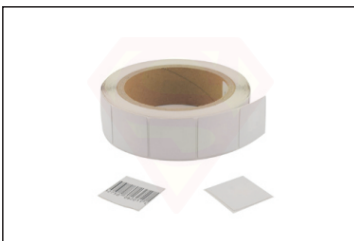
RF-2050(2X5 Label)

Frequency: 8.2MHz
 Spec: Deactivatable/Non-Deactivatable
 Dimension: 20mmx50mm
 Color: Barcode/White/Black/Transparent/
 Thermal or customized
 Packing: 20,000pcs/ctn, 0.015cbm
 (31x31x14cm), 8kg



RF-2347(Oval Label)

Frequency: 8.2MHz
 Spec: Deactivatable/Non-Deactivatable
 Dimension: 23mmx47mm
 Color: Barcode/White/Black/Transparent/
 Thermal or customized
 Packing: 20,000pcs/ctn, 0.018cbm
 (26x26x27cm), 8.5kg



RF-3030(3X3 Label)

Frequency: 8.2MHz
 Spec: Deactivatable/Non-Deactivatable
 Dimension: 30mmx33mm
 Color: Barcode/White/Black/
 Transparent/Thermal
 Packing: 20,000pcs/ctn, 0.015cbm
 (28x28x19cm), 8kg



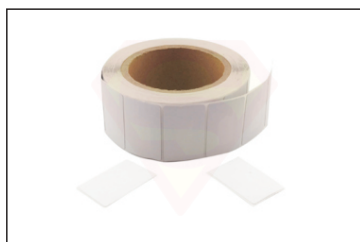
RF-3030R(Round Label)

Frequency: 8.2MHz
 Spec: Deactivatable/Non-Deactivatable
 Dimension: Ø30mm
 Color: Barcode/White/Black/Thermal
 Packing: 20,000pcs/ctn, 0.015cbm
 (27x27x21cm), 8kg



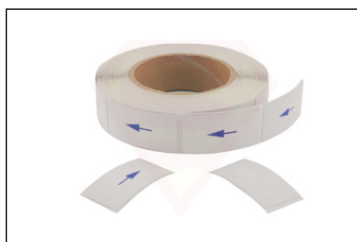
RF-3040(3X4 Label)

Frequency: 8.2MHz
 Spec: Deactivatable/Non-Deactivatable
 Dimension: 30mmx40mm
 Color: Barcode/White/Black/Transparent/
 Thermal
 Packing: 20,000pcs/ctn, 0.019cbm
 (29x29x24cm), 10kg



RF-3050(3X5 Label)

Frequency: 8.2MHz
Spec: Deactivatable/Non-Deactivatable
Dimension: 30mmx50mm
Color: Barcode/White/Black/
Transparent/Thermal
Packing: 20,000pcs/ctn, 0.019cbm
(26x26x28cm), 10kg



RF-3060(3X6 Label)

Frequency: 8.2MHz
Spec: Deactivatable/Non-Deactivatable
Dimension: 30mmx60mm
Color: Barcode/White/Black/
Transparent/Thermal
Packing: 20,000pcs/ctn, 0.025cbm
(35x35x20cm), 13.5kg



RF-4040(4X4 Label)

Frequency: 8.2MHz/9.5MHz
Spec: Deactivatable/Non-Deactivatable
Dimension: 40mmx40mm
Color: Barcode/White/Black/
Transparent/Thermal
Packing: 20,000pcs/ctn, 0.021cbm
(30x30x24cm), 11kg



RF-4040C(Capacitor Label)

Frequency: 8.2MHz/9.5MHz
Spec: Deactivatable/Non-Deactivatable
Dimension: 37mmx47mm
Color: Barcode/White/Black or Customized
Packing: 20,000pcs/ctn, 0.027cbm
(47x33x18cm), 12.2kg



RF-4040R(Round Label)

Frequency: 8.2MHz
Spec: Deactivatable/Non-Deactivatable
Dimension: Ø40mm
Color: Barcode/White/Black/
Transparent/Thermal
Packing: 20,000pcs/ctn, 0.021cbm
(30x30x24cm), 11kg



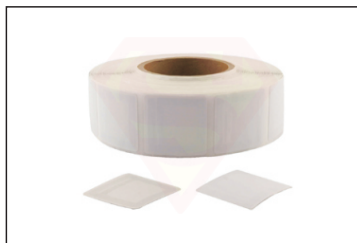
RF-4060(Shoe Label)

Frequency: 8.2MHz
Spec: Deactivatable/Non-Deactivatable
Dimension: 40mmx58mm
Color: Transparent
Packing: 20,000pcs/ctn, 0.025cbm
(28x28x32cm), 12kg



RF-5050(5X5 Label)

Frequency: 8.2MHz
Spec: Deactivatable/Non-Deactivatable
Dimension: 48mmx50mm
Color: Barcode/White/Black/
Transparent/Thermal
Packing: 20,000pcs/ctn, 0.027cbm
(32x32x26cm), 17kg



RF-5050C(Capacitor Label)

Frequency: 8.2MHz
Spec: Deactivatable/Non-Deactivatable
Dimension: 47mmx49mm
Color: Barcode/White/Black/
Transparent/Thermal
Packing: 20,000pcs/ctn, 0.034cbm
(54x34.5x18.5cm), 17.5kg



RF-5070(5X7 Label)

Frequency: 8.2MHz
Spec: Deactivatable/Non-Deactivatable
Dimension: 50mmx70mm
Color: Barcode/White/Black/Clear/Thermal
Packing: 20,000pcs/ctn, 0.027cbm
(31x31x14cm), 18kg



A-001(Large Square Card)

Frequency: 8.2MHz
Dimension: 70mmx61mm
Packing: 2,500pcs/ctn, 0.046cbm
(56x36x23cm), 17kg



A-003(Mini Square Card)

Frequency: 8.2MHz
Dimension: 52mmx45mm
Packing: 5,000pcs/ctn, 0.046cbm
(56x36x23cm), 17.5kg



A-008(Euro Card)

Frequency: 8.2MHz
Dimension: 86x60mm
Packing: Customized



A-011(Round Punch Tag)

Frequency: 8.2MHz
Dimension: 62mmx42mm
Packing: 2,000pcs/ctn, 0.026cbm
(30x21x42cm), 4.5kg



A-012(Square Punch Tag)

Frequency: 58KHz
Dimension: 50mmx15mm
Packing: 2,000pcs/ctn, 0.020cbm
(35x25x23cm), 9.5kg



A-013(AM Cloth Tag)

Frequency: 58KHz
Dimension: 65mmx28mm
Packing: 7,000pcs/ctn, 0.026cbm
(30x21x42cm), 5kg



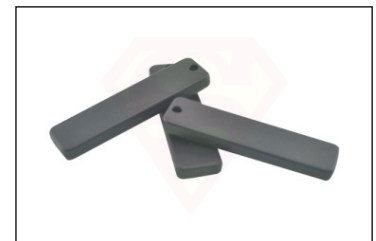
A-017(Strip Hang Tag)

Frequency: 58KHz
Dimension: 55mmx15mm
Packing: Customized



A-018(RF Cloth Tag)

Frequency: 8.2MHz
Dimension: 60mmx46mm
Packing: 15,000pcs/ctn, 0.024cbm
(30x50x16cm), 15kg



A-022(Plastic Hang Tag)

Frequency: 58KHz
Dimension: 55mmx15mm
Packing: 5,000pcs/ctn, 0.040cbm
(59x40x17cm), 15.5kg



EM-101(CD Label)

Inner Diameter: 2cm
Outer Diameter: 11.4cm
Strip Length: 10.3cm
Cobalt-based strip, good effect of De/
Remagnetizing.
Compatible with all EM systems such as 3M,
Dialog, Certus, Checkpoint etc.
Packing: 6,000pcs/ctn, 0.025cbm
(46.5x37x14.5cm), 12.5kg



EM-1040(10x40 Label)

Frequency: 100KC
Dimension: 10mmx40mm
Our EM label is based on Cobalt that has
better De/Reactive effect.
Our EM label is compatible with 3M, Certus,
Checkpoint, Dialog system.
Packing: 50,000pcs/ctn, 0.025cbm
(43x32x18cm), 10.6kg



EM-1051(10x51 Label)

Frequency: 100KC
Dimension: 10mmx51mm
Our EM label is based on Cobalt that has
better De/Reactive effect.
Our EM label is compatible with 3M, Certus,
Checkpoint, Dialog system.
Packing: 50,000pcs/ctn, 0.025cbm
(43x32x18cm), 12.1kg



EM-1063(10x63 Label)

Frequency: 100KC
Dimension: 10mmx63mm
Our EM label is based on Cobalt that has
better De/Reactive effect.
Our EM label is compatible with 3M, Certus,
Checkpoint, Dialog system.
Packing: 50,000pcs/ctn, 0.025cbm
(43x32x18cm), 14.6kg



EM-1090(10x90 Label)

Frequency: 100KC
Dimension: 10mmx90mm
Our EM label is based on Cobalt that has
better De/Reactive effect.
Our EM label is compatible with 3M, Certus,
Checkpoint, Dialog system.
Packing: 25,000pcs/ctn, 0.025cbm
(43x32x18cm), 11.6kg



SD-400(EM Deactivator)

Frequency: 100KC
Dimension: 272mmx225mmx108mm
Advanced technology: Infrared intelligence
deactivating technology.
Packing: 1set/ctn, 0.018cbm
(35x29x18cm), 9kg



SD-800(EM Deactivator)

Frequency: 100KC
Dimension: 415mmx360mmx300mm
Work in coordination with library automatic
managerial system.
Packing: 1set/ctn, 0.079cbm
(48.5x43x38cm), 14.3kg



S-001(Shaver Safer)

Outer Dimension: 137mmx112mmx40mm
 Inner Dimension: 113mmx105mmx36mm
 Lock: Magnetic Lock
 Packing: 60pcs/ctn, 0.043cbm
 (62.5x29x24cm), 9kg
 Volume weight: 9kg



S-001B(Shaver Safer)

Outer Dimension: 137mmx112mmx31mm
 Inner Dimension: 113mmx105mmx27mm
 Lock: Magnetic Lock
 Packing: 80pcs/ctn, 0.043cbm
 (62.5x29x24cm), 9kg
 Volume weight: 9kg



S-001C(Shaver Safer)

Outer Dimension: 148mmx120mmx45mm
 Inner Dimension: 125mmx112mmx40mm
 Lock: Magnetic Lock
 Packing: 60pcs/ctn, 0.056cbm
 (70x32x25cm), 9kg
 Volume weight: 12kg



S-001D(Shaver Safer)

Outer Dimension: 148mmx120mmx32mm
 Inner Dimension: 125mmx112mmx28mm
 Lock: Magnetic Lock
 Packing: 80pcs/ctn, 0.056cbm
 (70x32x25cm), 11kg
 Volume weight: 12kg



S-002B(Double CD)

Outer Dimension: 170mmx136mmx32mm
 Inner Dimension: 145mmx130mmx28mm
 Lock: Magnetic Lock
 Packing: 100/ctn, 0.087cbm
 (54x43.5x37cm), 18kg
 Volume weight: 18kg



S-004(PSP Box Safer)

Outer Dimension: 203mmx112mmx19mm
 Inner Dimension: 180mmx105mmx15mm
 Lock: Magnetic Lock
 Packing: 100pcs/ctn, 0.067cbm
 (45x30x50cm), 14.5kg
 Volume weight: 14kg



S-004B(Single DVD)

Outer Dimension: 215mmx150mmx20mm
 Inner Dimension: 192mmx144mmx16mm
 Lock: Magnetic Lock
 Packing: 100pcs/ctn, 0.073cbm
 (52x44x32cm), 19.5kg
 Volume weight: 15kg



S-004C(Double DVD)

Outer Dimension: 215mmx150mmx39mm
 Inner Dimension: 192mmx144mmx35mm
 Lock: Magnetic Lock
 Packing: 60pcs/ctn, 0.084cbm
 (60x44x32cm), 13kg
 Volume weight: 16.8kg



S-004D(Triple DVD)

Outer Dimension: 215mmx150mmx59mm
 Inner Dimension: 192mmx144mmx55mm
 Lock: Magnetic Lock
 Packing: 40pcs/ctn, 0.084cbm
 (60x44x32cm), 12kg
 Volume weight: 17kg



S-004E(Multi Function)

Outer Dimension: 230mmx110mmx30mm
 Inner Dimension: 210mmx100.5mmx26mm
 Lock: Magnetic Lock
 Packing: 100pcs/ctn, 0.086cbm
 (49x34x52cm), 18kg
 Volume weight: 18kg



S-005C(Super DVD)

Outer Dimension: 230mmx157.5mmx55mm
 Inner Dimension: 200mmx150mmx50mm
 Lock: Magnetic Lock
 Packing: 50pcs/ctn, 0.115cbm
 (63x45.5x40cm), 16kg
 Volume weight: 23kg



S-006(Single Battery)

Outer Dimension: 161mmx114mmx40mm
 Inner Dimension: 80mmx110mmx22mm
 Lock: Magnetic Lock
 Packing: 180pcs/ctn, 0.087cbm
 (53x46x36cm), 19.5kg
 Volume weight: 18kg



S-007(Double Battery)

Outer Dimension: 161mmx114mmx57mm
 Inner Dimension: 80mmx110mmx36mm
 Lock: Magnetic Lock
 Packing: 120pcs/ctn, 0.087cbm
 (53x46x36cm), 14kg
 Volume weight: 18kg



S-008(Cigarette)

Outer Dimension: 356mmx112mmx60mm
 Inner Dimension: 294mmx108mmx56mm
 Lock: Magnetic Lock
 Packing: 40pcs/ctn, 0.114cbm
 (53x37x58.5cm), 12kg
 Volume weight: 23kg



S-008B(Cigarette)

Outer Dimension: 335mmx115mmx75mm
 Inner Dimension: 293mmx110mmx57mm
 Lock: Magnetic Lock
 Packing: 40pcs/ctn, 0.116cbm
 (53x37x59cm), 17kg
 Volume weight: 24kg



S-009(Ink Jet)

Outer Dimension: 141.4mmx123.4mmx75.7mm
 Inner Dimension: 53.4mmx119mmx51.7mm
 Lock: Magnetic Lock
 Packing: 100pcs/ctn, 0.083cbm
 (44.5x37x51cm), 12kg
 Volume weight: 17kg



S-010(Multi Function)

Outer Dimension: 244mmx130mmx60mm
 Inner Dimension: 165mmx124mmx51mm
 Lock: Magnetic Lock
 Packing: 40pcs/ctn, 0.088cbm
 (53x46x36cm), 9kg
 Volume weight: 18kg



S-010C(Multi Function)

Outer Dimension: 251mmx130mmx76mm
 Inner Dimension: 170mmx126mmx55mm
 Lock: Magnetic Lock
 Packing: 40pcs/ctn, 0.087cbm
 (53x46x36cm), 9.5kg
 Volume weight: 18kg



S-011(Gum Safer)

Outer Dimension: 243mmx123mmx31mm
 Inner Dimension: 162mmx119mmx30mm
 Lock: Magnetic Lock
 Packing: 100pcs/ctn, 0.113cbm
 (64x44x40cm), 17.5kg
 Volume weight: 23kg



S-012(Chocolate)

Outer Dimension: 220mmx120mmx44.5mm
 Inner Dimension: 182mmx115mmx40mm
 Lock: Magnetic Lock
 Packing: 100pcs/ctn, 0.069cbm
 (53x30x43.5cm), 12kg
 Volume weight: 14kg



S-013(Multi Function)

Outer Dimension: 159mmx80mmx70mm
 Inner Dimension: 142mmx74mmx54mm
 Lock: Magnetic Lock
 Packing: 80pcs/ctn, 0.097cbm
 (70x42x33cm), 14.5kg
 Volume weight: 20kg



S-013B(Multi Function)

Outer Dimension: 185mmx86mmx76mm
 Inner Dimension: 167mmx80mmx60mm
 Lock: Magnetic Lock
 Packing: 50pcs/ctn, 0.070cbm
 (45x40x39cm), 11kg
 Volume weight: 15kg



S-014(Multi Function)

Outer Dimension: 208mmx88mmx77mm
 Inner Dimension: 192mmx70mmx70mm
 Lock: Magnetic Lock
 Packing: 50pcs/ctn, 0.077cbm
 (46x40x42cm), 11kg
 Volume weight: 15kg



S-014B(Makeup II)

Outer Dimension: 110mmx88mmx77mm
 Inner Dimension: 92mmx72mmx72mm
 Lock: Magnetic Lock
 Packing: 100pcs/ctn, 0.084cbm
 (46x40x46cm), 13.5kg
 Volume weight: 17kg



S-014C(Multi Function)

Outer Dimension: 145mmx145mmx225mm
 Inner Dimension: 140mmx140mmx210mm
 Lock: Magnetic Lock
 Packing: 20pcs/ctn, 0.101cbm
 (78x31x42cm), 12.5kg
 Volume weight: 20kg



S-015(Multi Function)

Outer Dimension: 220mmx160mmx101mm
 Inner Dimension: 205mmx151mmx81mm
 Lock: Magnetic Lock
 Packing: 20pcs/ctn, 0.081cbm
 (81x42x24cm), 8.5kg
 Volume weight: 17kg



S-015B(Multi Function)

Outer Dimension: 181mmx160mmx101mm
 Inner Dimension: 165mmx151mmx81mm
 Lock: Magnetic Lock
 Packing: 40pcs/ctn, 0.133cbm
 (66x52x39cm), 13.5kg
 Volume weight: 27kg



S-015C(Multi Function)

Outer Dimension: 147mmx186mmx171mm
Inner Dimension: 128mmx180mmx155mm
Lock: Magnetic Lock
Packing: 24pcs/ctn, 0.126cbm
(70x39x46cm), 15kg
Volume weight: 26kg



S-016(Multi Function)

Outer Dimension: 220mmx117mmx98mm
Inner Dimension: 205mmx110mmx85mm
Lock: Magnetic Lock
Packing: 20pcs/ctn, 0.062cbm
(62x42x24cm), 7kg
Volume weight: 12kg



S-016B(Multi Function)

Outer Dimension: 172mmx117mmx98mm
Inner Dimension: 155mmx110mmx85mm
Lock: Magnetic Lock
Packing: 40pcs/ctn, 0.095cbm
(62x42x36.5cm), 14kg
Volume weight: 19kg



S-017(Multi Function)

Outer Dimension: 241mmx123mmx83mm
Inner Dimension: 225mmx115mmx65mm
Lock: Magnetic Lock
Packing: 50pcs/ctn, 0.131cbm
(64x51x40cm), 16.5kg
Volume weight: 27kg



S-017B(Multi Function)

Outer Dimension: 186mmx123mmx83mm
Inner Dimension: 170mmx115mmx65mm
Lock: Magnetic Lock
Packing: 50pcs/ctn, 0.110cbm
(43.5x63.5x40cm), 13.5kg
Volume weight: 23kg



S-018(Multi Function)

Outer Dimension: 155mmx125mmx48mm
Inner Dimension: 150mmx120mmx45mm
Lock: Magnetic Lock
Packing: 50pcs/ctn, 0.089cbm
(46x38.5x50.5cm), 11.5kg
Volume weight: 18kg



S-019(Multi Function)

Outer Dimension: 155mmx96mmx79mm
Inner Dimension: 140mmx90mmx62mm
Lock: Magnetic Lock
Packing: 60pcs/ctn, 0.088cbm
(53x46x36cm), 13kg
Volume weight: 18kg



S-019B(Multi Function)

Outer Dimension: 186mmx141mmx76mm
Inner Dimension: 175mmx135mmx60mm
Lock: Magnetic Lock
Packing: 50pcs/ctn, 0.114cbm
(75x39x39cm), 15kg
Volume weight: 23kg



S-019C(Multi Function)

Outer Dimension: 150mmx140mmx76mm
Inner Dimension: 130mmx130mmx60mm
Lock: Magnetic Lock
Packing: 50pcs/ctn, 0.092cbm
(74x39x32cm), 13kg
Volume weight: 19kg



S-020(Toothpaste)

Outer Dimension: 254mmx86mmx55mm
Inner Dimension: 247mmx61mmx51mm
Lock: Magnetic Lock
Packing: 60pcs/ctn, 0.088cbm
(53x46x36cm), 10.5kg
Volume weight: 18kg



S-020B(Toothpaste II)

Outer Dimension: 262.4mmx92mmx84mm
Inner Dimension: 250mmx80mmx70mm
Lock: Magnetic Lock
Packing: 50pcs/ctn, 0.124cbm
(53x51.5x45.5cm), 11.7kg
Volume weight: 25kg



S-021 (Gum)

Outer Dimension: Ø74mmx136mm
Inner Dimension: Ø70mmx120mm
Lock: Magnetic Lock
Packing: 100pcs/ctn, 0.091cbm
(45x45x45cm), 11kg
Volume weight: 19kg



S-021B(Gum II)

Outer Dimension: Ø74mmx102mm
Inner Dimension: Ø70mmx86mm
Lock: Magnetic Lock
Packing: 100pcs/ctn, 0.081cbm
(45x45x40cm), 10kg
Volume weight: 17kg



S-021C(Gum III)

Outer Dimension: Ø155mmx204mm
Inner Dimension: Ø147mmx195mm
Lock: Magnetic Lock
Packing: 20pcs/ctn, 0.102cbm
(78x31x42cm), 9kg
Volume weight: 20kg



S-021D(Gum IV)

Outer Dimension: Ø124mmx163mm
Inner Dimension: Ø107mmx147mm
Lock: Magnetic Lock
Packing: 40pcs/ctn, 0.109cbm
(62x50x35cm), 10.5kg
Volume weight: 18kg



S-022(Multi Function)

Outer Dimension: 261mmx111.6mmx124mm
Inner Dimension: 250mmx100mmx100mm
Lock: Magnetic Lock
Packing: 50pcs/ctn, 0.192cbm
(63.5x57x53cm), 19kg
Volume weight: 39kg



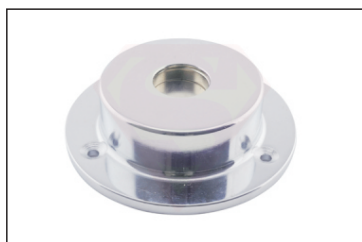
S-022B(Multi Function)

Outer Dimension: 126mmx107mmx117mm
Inner Dimension: 110mmx100mmx100mm
Lock: Magnetic Lock
Packing: 50pcs/ctn, 0.092cbm
(60x55x28cm), 12kg
Volume weight: 19kg



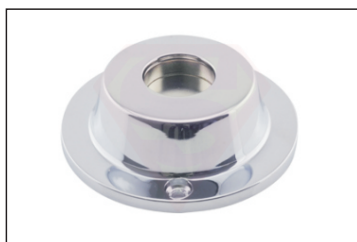
S-023(Multi Function)

Outer Dimension: 255mmx147mmx55mm
Inner Dimension: 240mmx140mmx50mm
Lock: Magnetic Lock
Packing: 50pcs/ctn, 0.123cbm
(53x51x45.5cm), 17kg
Volume weight: 25kg



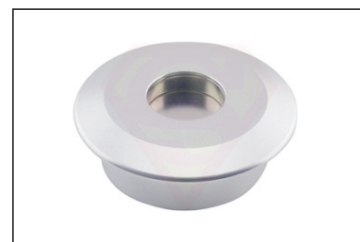
D-100(Steel Countertop)

Dimension: Ø95mmx30mm
Magnetic Force: Standard
Weight: 750g
Packing: 50pcs/ctn, 0.025cbm
(42x26x23cm), 39kg



D-101(Aluminum Countertop)

Dimension: Ø75mmx25mm
Magnetic Force: Standard
Weight: 210g
Packing: 100pcs/ctn, 0.025cbm
(42x26x23cm), 22kg



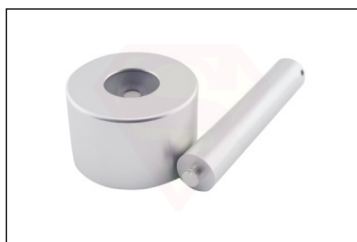
D-102(Aluminum Countersunk)

Dimension: Ø65mmx25mm
Magnetic Force: Standard
Weight: 290g
Packing: 100pcs/ctn, 0.025cbm
(42x26x23cm), 21kg



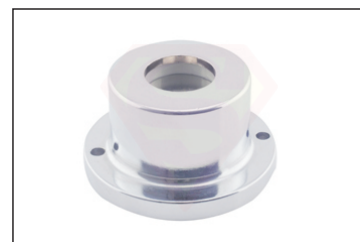
D-103(Karaok)

Dimension: Ø55mmx125mm
Magnetic Force: Standard/Super
Weight: 300g
Packing: 60pcs/ctn, 0.057cbm
(43x36x37cm), 18kg



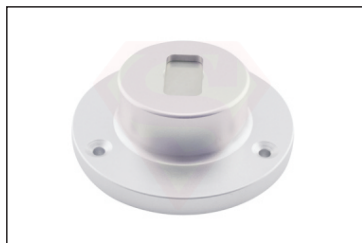
D-103B(Torch)

Dimension: Ø56mmx135mm
Magnetic Force: Standard
Weight: 460g
Packing: 50pcs/ctn, 0.020cbm
(42x28x17cm), 23kg



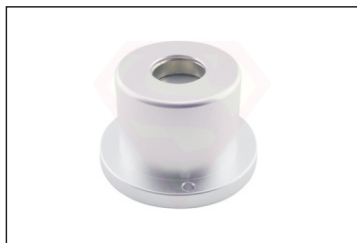
D-104(Small Countertop)

Dimension: Ø60mmx33mm
Magnetic Force: Standard
Weight: 260g
Packing: 100pcs/ctn, 0.024cbm
(42x26x23cm), 26kg



D-105(Glasses Countertop)

Dimension: Ø88mmx30mm
Magnetic Force: Standard
Weight: 290g
Packing: 50pcs/ctn, 0.025cbm
(42x26x23cm), 16kg



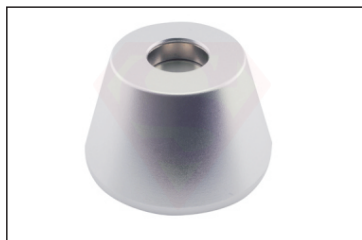
D-201(Super Countertop)

Dimension: Ø75mmx45mm
Magnetic Force: Super
Weight: 460g
Packing: 50pcs/ctn, 0.020cbm
(42x28x17cm), 22kg



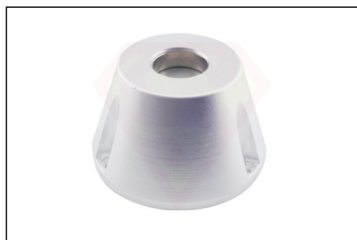
D-202(Super Countersunk)

Dimension: Ø75mmx45mm
Magnetic Force: Super
Weight: 460g
Packing: 50pcs/ctn, 0.020cbm
(42x28x17cm), 22kg



D-203(Cone)

Dimension: Ø75mmx45mm
Magnetic Force: Super
Weight: 460g
Packing: 50pcs/ctn, 0.020cbm
(42x28x17cm), 22kg



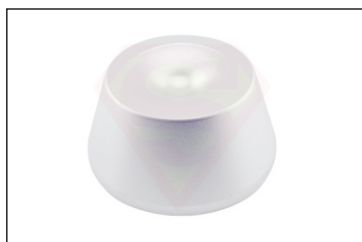
D-204(Cone W/Notch)

Dimension: Ø75mmx45mm
Magnetic Force: Super
Weight: 460g
Packing: 50pcs/ctn, 0.020cbm
(42x28x17cm), 22kg



D-204B(Cone W/Notch)

Dimension: Ø75.5mmx32mm
Magnetic Force: Super
Weight: 460g
Packing: 50pcs/ctn, 0.020cbm
(42x28x17cm), 22kg



D-301(Magnetic)

Dimension: Ø75mmx35mm
Magnetic Force: Super
Weight: 460g
Packing: 50pcs/ctn, 0.020cbm
(42x28x17cm), 20kg



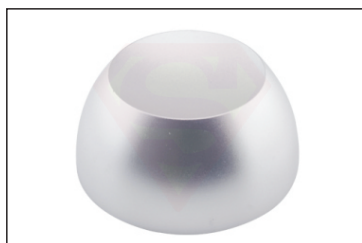
D-302(Flat Golf Detacher)

Dimension: Ø75mmx35mm
Magnetic Force: Super
Weight: 460g
Packing: 50pcs/ctn, 0.020cbm
(42x28x17cm), 20kg



D-302B(Flat Golf Detacher)

Dimension: Ø68mmx28mm
Magnetic Force: Super
Weight: 300g
Packing: 50pcs/ctn, 0.020cbm
(42x28x17cm), 20kg



D-303(Golf/Dome Detacher)

Dimension: Ø75mmx35mm
Magnetic Force: Super
Weight: 460g
Packing: 50pcs/ctn, 0.020cbm
(42x28x17cm), 20kg



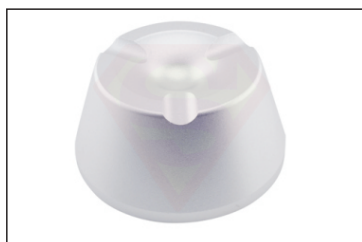
D-303B(Golf W/Notch)

Dimension: Ø72mmx35mm
Magnetic Force: Super
Weight: 400g
Packing: 50pcs/ctn, 0.020cbm
(42x28x17cm), 20kg



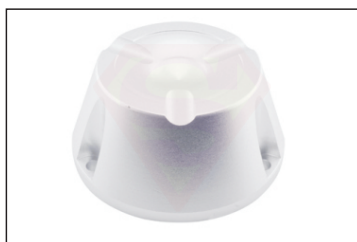
D-304(Magnetic)

Dimension: Ø75mmx35mm
Magnetic Force: Super
Weight: 460g
Packing: 50pcs/ctn, 0.020cbm
(42x28x17cm), 21.5kg



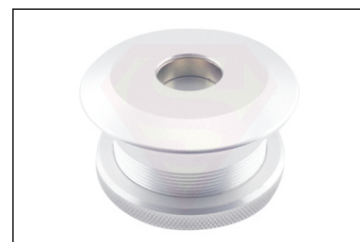
D-305(Magnetic)

Dimension: Ø75mmx35mm
Magnetic Force: Super
Weight: 460g
Packing: 50pcs/ctn, 0.020cbm
(42x28x17cm), 21.5kg



D-305B(Magnetic W/Natch)

Dimension: Ø72mmx39mm
Magnetic Force: Super
Weight: 389g
Packing: 50pcs/ctn, 0.020cbm
(42x28x17cm), 20kg



D-306(Magnetic)

Dimension: Ø74mmx35mm
Magnetic Force: Super
Weight: 420g
Packing: 50pcs/ctn, 0.027cbm
(42x27x24cm), 37kg



D-307(Plastic Coated)

Dimension: Ø82mmx75mm
Magnetic Force: Super
Weight: 360g
Packing: 50pcs/ctn, 0.033cbm
(42x29x27cm), 18kg



D-307B(Magnetic)

Dimension: Ø74mmx35mm
Magnetic Force: Super
Weight: 420g
Packing: 50pcs/ctn, 0.020cbm
(42x28x17cm), 24kg



D-308(Key Unlock)

Dimension: Ø74mmx37mm
Magnetic Force: Super
Weight: 520g
Packing: 50pcs/ctn, 0.020cbm
(42x28x17cm), 22kg



D-309(Key Unlock)

Dimension: Ø88mmx40mm
Magnetic Force: Super
Weight: 430g
Packing: 50pcs/ctn, 0.020cbm
(42x28x17cm), 22kg



D-311(Dome W/Natch)

Dimension: Ø73mmx34mm
Magnetic Force: Super
Weight: 400g
Packing: 50pcs/ctn, 0.020cbm
(42x28x17cm), 20kg



D-312(Hyper Detacher)

Dimension: Ø90mmx52mm
Magnetic Force: Hyper
Weight: 1200g
Packing: 25pcs/ctn, 0.020cbm
(42x28x17cm), 26kg



D-312B(Hyper Detacher)

Dimension: Ø82mmx55mm
 Magnetic Force: Hyper
 Weight: 1033g
 Packing: 10pcs/ctn, 0.012cbm
 (34x25x14cm), 11kg



D-401(Flexible Detacher)

Dimension: Ø40mmx45mm
 Magnetic Force: Standard
 Weight: 400g
 Packing: 50pcs/ctn, 0.021cbm
 (41.5x28x18cm), 22kg



D-402(Magnetic Lid)

Dimension: Ø45mmx38mm
 Weight: 48g
 Packing: 250pcs/ctn, 0.011cbm
 (34x24x14cm), 12kg



D-403B(Stoplock Releaser)

Dimension: Ø20mmx58mm
 Magnetic Force: Standard
 Weight: 60g
 Packing: 400pcs/ctn, 0.014cbm
 (34x24x17cm), 24kg



D-404(Cylindrical)

Dimension: Ø40mmx45mm
 Magnetic Force: Standard/Super
 Weight: 211g
 Packing: 50pcs/ctn, 0.021cbm
 (41.5x28x18cm), 22kg



D-405(Sliding Detacher)

Dimension: 118.42mmx23.66mmx12.5mm
 Magnetic Force: Standard
 Weight: 87g
 Packing: Customized



D-406(Portable Detacher)

Dimension: 102.2mmxØ47.85mmxØ30.1mm
 Magnetic Force: Standard
 Weight: 100g
 Packing: Customized



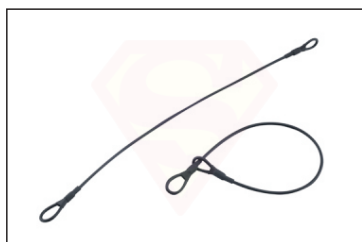
D-407(Detacher)

Dimension: 43mmx93mmx17mm
 Magnetic Force: Standard
 Weight: 40g
 Packing: 100pcs/ctn, 0.016cbm
 (40x30x13cm), 4kg



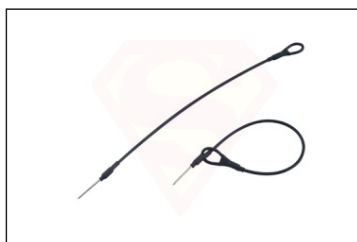
D-409(Detacher)

Dimension: Ø43mm
 Weight: 40g
 Packing: 300pcs/ctn, 0.028cbm
 (37x31x24cm), 13kg



L-001(Two Loops)

Length: 170mm or Customized
Color: Black/White
Packing: 10,000pcs/ctn, 0.035cbm
(55x40x16cm), 22.8kg



L-002(Loop-to-Pin)

Length: 170mm or Customized
Color: Black/White
Packing: 10,000pcs/ctn, 0.028cbm
(52x36x15cm), 22.5kg



L-003(Point Welding)

Length: 178mm or Customized
Packing: 10,000pcs/ctn, 0.011cbm
(30x20x18cm), 13.5kg



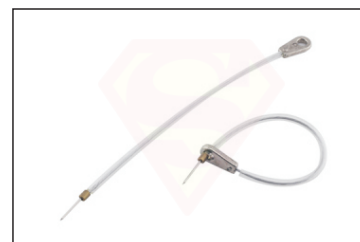
L-004(Loop-to-Point)

Length: 178mm or Customized
Packing: 5,000pcs/ctn, 0.011cbm
(30x20x18cm), 7.5kg



L-007(Multi Coated)

Length: 650mm or Customized
Color: Black/White
Packing: 500pcs/ctn, 0.032cbm
(38x30x28cm), 29kg



L-008(Heavy Loop)

Length: 180mm or Customized
Color: Transparent
Packing: 2,500pcs/ctn, 0.028cbm
(52x36x15cm), 15.5kg



L-009(Jewelry Lanyard)

Length: 150mm or Customized
Color: Black
Packing: 10,000pcs/ctn, 0.030cbm
(38x29x28cm), 28.5kg



L-010(Lanyard with Cap)

Length: 250mm or Customized
Color: Transparent
Packing: 2,500pcs/ctn, 0.028cbm
(52x36x15cm), 15.5kg



L-011(Spring Lanyard)

Length: Customized
Color: Black
Packing: Customized



A2(Security Display Hook)

Color: White or Customized
 Dimension: 230mm/180mm/150mm
 Effective Length: 195mm/145mm/120mm
 Lock: Mechanic Lock(Sliding Pad)
 Packing: Customized



B2(Security Display Hook)

Color: White or Customized
 Dimension: 230mm/180mm/150mm
 Effective Length: 195mm/145mm/120mm
 Lock: Mechanic Lock(Sliding Pad)
 Packing: Customized



C2(Security Display Hook)

Color: White or Customized
 Dimension: 230mm/180mm/150mm
 Effective Length: 195mm/145mm/120mm
 Lock: Mechanic Lock(Sliding Pad)
 Packing: Customized



D(Security Display Hook)

Color: White or Customized
 Dimension: 230mm/180mm/150mm
 Effective Length: 195mm/145mm/120mm
 Lock: Mechanic Lock(Sliding Pad)
 Packing: Customized



E1(Security Display Hook)

Color: White or Customized
 Dimension: 230mm/180mm/150mm
 Effective Length: 195mm/145mm/120mm
 Lock: Mechanic Lock(Sliding Pad)
 Packing: Customized



G1(Security Display Hook)

Color: White or Customized
 Dimension: 230mm/180mm/150mm
 Effective Length: 195mm/145mm/120mm
 Lock: Mechanic Lock(Sliding Pad)
 Packing: Customized



C-101(Nipple Clutch)

Color: Gray/White or Customized
 Dimension: Ø19mm
 Lock: Magnetic Lock
 Packing: 4,000pcs/ctn, 0.020cbm
 (40x30x17cm), 14kg



C-102(Cone Clutch)

Color: Gray/White or Customized
 Dimension: Ø25mm
 Lock: Magnetic Lock
 Packing: 2,000pcs/ctn, 0.028cbm
 (38x29x25cm), 11kg



C-103(Ink Clutch)

Color: Gray/White or Customized
 Dimension: Ø42mm
 Lock: Magnetic Lock
 Packing: 1,000pcs/ctn, 0.025cbm
 (49x34*15cm), 29kg



C-103B (RF/AM Ink Clutch)

Color: Gray/White or Customized
 Dimension: Ø42mm
 Lock: Magnetic Lock
 Packing: Customized



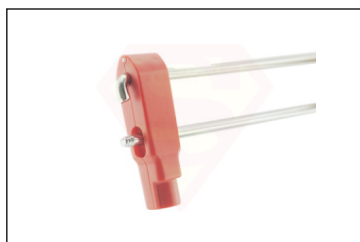
C-104(Stoplock)

Color: Red/Black or Customized
 Dimension: 39mmx19mm
 Lock: Magnetic Lock
 Packing: 1,000pcs/ctn, 0.020cbm
 (40x30x17cm), 7kg



C-104B(Stoplock)

Color: Red/Black or Customized
 Dimension: 39mmx19mm
 Lock: Magnetic Lock
 Packing: 1,000pcs/ctn, 0.029cbm
 (40x30x24cm), 10kg



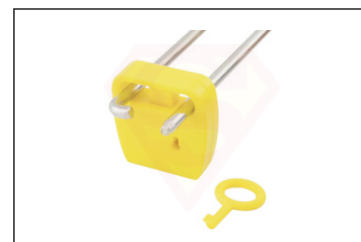
C-104C(Double Stoplock)

Color: Red/Black or Customized
 Dimension: 70mmx19mm
 Lock: Magnetic Lock
 Packing: 1,000pcs/ctn, 0.031cbm
 (59x40x13cm), 12kg



C-104D(Double Stoplock)

Color: Black or Customized
 Dimension: 45mmx35mm
 Lock: Magnetic Lock
 Packing: Customized



C-104E(Double Stoplock)

Color: yellow or Customized
 Dimension: 45mmx45mm
 Lock: Magnetic Lock
 Packing: Customized



C-106(Steel Lock)

Color: Gray/White or Customized
 Lock: Steel Plate Lock
 Packing: 50,000pcs/ctn, 0.026cbm
 (40x30x22cm), 17kg



C-107(Steel Hook)

Color: Gray/White or Customized
 Lock: Steel Plate Lock
 Packing: 1,500pcs/ctn, 0.013cbm
 (34x24x16cm), 7kg



C-108(Back Clutch)

Color: Gray/White or Customized
 Dimension: 51mmx28mm
 Lock: Steel Plate Lock
 Packing: 1,000pcs/ctn, 0.020cbm
 (39x29x18cm), 7kg



P-01(Flat Pin)

Length: 16mm or 19mm or Customized
Head Diameter: 12mm
Spec: Smooth or Grooved
Packing: 10,000pcs/ctn, 0.011cbm
(34x24x14cm), 13.5kg



P-01B(Mini Flat pin)

Length: 16mm or 19mm or Customized
Head Diameter: 11mm
Spec: Smooth or Grooved
Packing: 20,000pcs/ctn, 0.021cbm
(47x32x14cm), 22kg



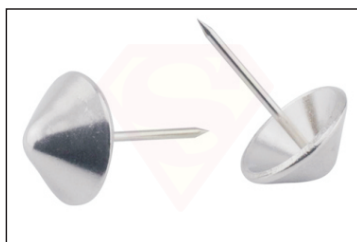
P-02(Swivel Pin)

Length: 16mm or 19mm or Customized
Head Diameter: 12mm
Spec: Smooth or Grooved
Packing: 10,000pcs/ctn, 0.011cbm
(34x24x14cm), 21kg



P-05(Dome Pin)

Length: 16mm or 19mm or Customized
Head Diameter: Ø15mm or 18mm
Spec: Smooth or Grooved
Packing: 10,000pcs/ctn, 0.024cbm
(41x31x19cm), 20kg



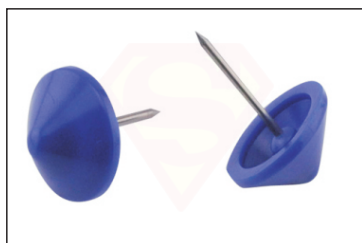
P-06(Cone Pin)

Length: 16mm or 19mm or Customized
Head Diameter: 14mm
Spec: Smooth or Grooved
Packing: 10,000pcs/ctn, 0.024cbm
(41x31x19cm), 20kg



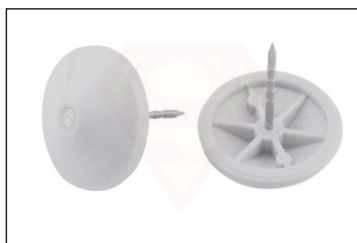
P-06B(Mini Cone Pin)

Length: 16mm or 19mm or Customized
Head Diameter: 13mm
Spec: Smooth or Grooved
Packing: 10,000pcs/ctn, 0.024cbm
(41x31x19cm), 20kg



P-07(Cone Plastic)

Length: 16mm or 19mm or Customized
Head Diameter: 16mm
Spec: Smooth or Grooved
Packing: 10,000pcs/ctn, 0.024cbm
(41x31x19cm), 9kg



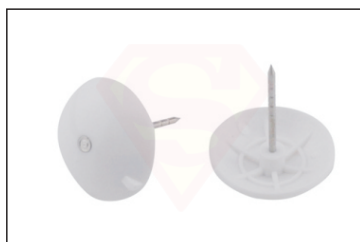
P-08(Dome Plastic)

Length: 16mm or 19mm or Customized
Head Diameter: 20mm
Spec: Smooth or Grooved
Packing: 10,000pcs/ctn, 0.035cbm
(56x35x18cm), 11kg



P-08B(Light Dome Plastic)

Length: 16mm or 19mm or Customized
Head Diameter: 20mm
Spec: Smooth or Grooved
Packing: 10,000pcs/ctn, 0.035cbm
(56x35x18cm), 8kg



P-09(Umbrella)

Length: 16mm or 19mm or Customized
Head Diameter: 20mm
Spec: Smooth or Grooved
Packing: 10,000pcs/ctn, 0.035cbm
(56x35x18cm), 11kg



P-011(Color Pin)

Length: 16mm or 19mm or Customized
Head Diameter: 12mm
Spec: Smooth or Grooved
Packing: 10,000pcs/ctn, 0.014cbm
(34x24x17cm), 18kg



P-012(Mini Dome Plastic)

Length: 16mm or 19mm or Customized
Head Diameter: 13mm
Spec: Smooth or Grooved
Packing: 10,000pcs/ctn, 0.013cbm
(34x24x16cm), 6kg



P-020(Mushroom)

Length: 16mm or 19mm or Customized
Head Diameter: 18mm
Spec: Smooth or Grooved
Packing: 10,000pcs/ctn, 0.041cbm
(56x35x21cm), 11kg



C-001(Ferrite Coil)

Frequency: 58KHz /8.2MHz
Spec: 25mm/30mm/33mm or Customized
Packing: Customized



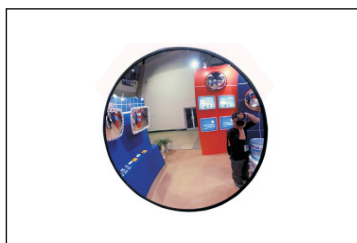
C-002(Core Coil)

Frequency: 8.2/3.25/1.95/4.8MHz or Customized
Spec: Various shape such as round, square, cone etc
Packing: Customized



C-105(Magnetic Lock)

Dimension: Ø12mm
Lock: Magnetic Lock
Packing: 10,000pcs/ctn, 0.026cbm
(40x30x22cm), 19kg



M1(Portable Anti-theft Convex Mirror)

Dimension: 30/40/50/60/70cm
Color: Black or Customized
Material: Acrylic(PMMA)
Packing: Customized



E-001(Eas Shopping Bag)

Frequency: 8.2MHz/58KHz
Spec: Dual Alarm
Dimension: 570mmx500mm
Color: Gray/Red/Black or customized
Lock: Magnetic Lock
Packing: 25pcs/ctn, 0.048cbm
(70x53x13cm), 10kg



Shanghai Sinotag Electronic Technology Co., Ltd
Room 1807, Huaihai Zhonghua building,
No.885 Renmin Road, Huangpu District,
Shanghai, China
Mobile: +86-13301731273
+86-13052002962
E-mail: info@sinotag.net, sales@sinotag.net